

# Learn English

at schools in the  
**UK, USA, Canada,**  
Australia and  
**New Zealand. 2014**

**Experience** the world **Learn** with **technology**  
**Make friends** for life **Travel** to one of 18 amazing locations



# our goal

To provide an environment where you learn English, experience the digital classroom and live a rich, connected life.

To achieve this, we aim to:

- 1. Provide high quality English language lessons using the latest technology
- 2. Offer a range of courses to meet your needs
- 3. Help you set objectives, monitor your progress and achieve success
- 4. Provide high standards of support services and facilities
- 5. Create opportunities for you to use English with other international students and native English speakers

## CONTENTS

- 4 Why Embassy English
- 6 Fantastic facilities
- 8 Home away from home
- 10 My Embassy life
- 12 Teaching with technology

### Our courses

- 14 Our courses
- 15 Your progress
- General English
- 16 Standard Programme
- 17 Travel and Culture
- 18 Intensive Programme
- 19 Electives
- Long-term English
- 20 Language Year Abroad
- 21 English for Academic Purposes
- Business English
- 22 Business Communication Skills
- 23 Power Speaking
- 24 English in Action
- 25 English Language Co-op Programme
- Exam Preparation
- 26 IELTS
- 26 TOEFL
- 27 Cambridge ESOL FCE & CAE

### Your location

- 29 UK
- 30 Oxford
- 31 London
- 32 Cambridge
- 33 Hastings
- 34 Brighton
- 35 USA
- 36 Los Angeles
- 37 San Francisco
- 38 Fort Lauderdale
- 39 San Diego
- 40 Next stop New York
- 41 New York
- 42 Boston
- 43 Canada
- 44 Victoria
- 45 Toronto
- 46 Australia
- 48 Melbourne
- 49 Sydney
- 50 Surfers Paradise
- 51 Brisbane
- 52 New Zealand
- 53 Auckland





# Why Embassy English?

Learn in one of our 18 amazing locations



You'll have access to your work outside of lessons via Study Smart

## 1 WE HAVE BEEN TEACHING ENGLISH FOR OVER 40 YEARS

We have years of experience teaching English to thousands of students just like you, from over 100 countries around the world.

## 2 18 STUDY CENTRES AROUND THE WORLD

As a student, you'll have your own idea about where you want to study. Embassy has a location to suit everyone.

## 3 LEARNING TECHNOLOGY

Every Embassy Study Centre is equipped with the latest learning technology in classrooms and online. Classes are interactive and you are encouraged to bring your devices (tablets, laptops and smartphones) to class.

## 4 STUDY SMART

Our custom-designed learning management system gives you 24/7 access to practice and review materials. You can also use it to monitor your progress and build a learning portfolio.

## 5 INTERNATIONAL QUALIFICATIONS

Embassy courses are designed to help you get ahead in life. We offer internationally recognised exams such as IELTS, TOEFL and Cambridge exams.

## 6 ACHIEVE SUCCESS

Whether you are learning English to get a better job, to go on to a university or in order to travel, we will help you succeed. We can also give you advice about university and your career.



Teachers use the latest technology to really help you understand

## 7 A GLOBAL CLASS

We attract students from all over the world so you will learn in a class with people from any one of over 100 different countries.

## 8 ACCOMMODATION

You are in safe hands with Embassy. You can stay in one of our residences or with one of our local host families.

## 9 FREE TIME

After a busy day of learning you can take part in lots of different activity programmes organised by Embassy in the evenings and on weekends.

## 10 AWARD WINNING

Embassy is an award-winning school. We were named 'International Chain School of the Year' by the Language Travel Magazine (LTM) in 2007, 2009, 2010 and 2012.



I'm in the FCE exam class now and we're really focussed on the certificate. I'm really happy, my teacher is really good; I'm very happy with the methods of teaching. The technology used in the class is so useful, it helps the teacher give a really good lesson.

Sofia, Spain





The thing which impressed me most when I first arrived was the electronic smart boards – the first time I've seen these. I found the smart boards really helpful. They have a prayer room here too, it's helped me to have a room set aside for prayer.

Abdulla, Libya

# Fantastic facilities

Our bright, modern Study Centre in LA



## Bright, high-tech and comfortable: Embassy Study Centres designed for you.

We want you to be able to concentrate on your studies, so while each of our Study Centres has its own personality, they are also designed to be the best possible learning environment.

Every Embassy Study Centre has the same high standard of facilities.

- Comfortable, stylish classrooms
- Computer stations and lounges
- Cafeterias and student lounges
- Welcoming receptions
- Free wireless internet
- Student welfare and accommodation services

Great outside space to catch up with friends in Cambridge



Light and modern classrooms with latest technology at Toronto

You can share pictures and experiences and keep updated with our school Facebook pages



You'll find the latest equipment available in our IT suites



# Home away from home

**Coming to study at Embassy might be your first experience of being away from family and friends. Or it could just be a chance to explore somewhere new. Wherever you come from, we provide safe, secure accommodation to help you feel at home.**



Spacious and bright accommodation in Fort Lauderdale

Gym facilities at Manhattan School of Music in New York



An excellent way to immerse yourself in the culture and customs in our Homestay



Excellent meals available at our onsite canteen in Hastings



Fully equipped kitchens in our Melbourne residences

## HOMESTAY

You can stay in a Homestay, in a private apartment or even organise your own accommodation. We work with professional accommodation advisors at some of our Study Centres to make sure you get to stay in a place that suits you.

If you would prefer to live in a homestay, you can choose our Homestay accommodation option. Choosing Homestay means you will be fully immersed in the English language in a friendly and welcoming family home. You can learn about the local culture and people and your host family homestay will take care of your meals.

## RESIDENCES

Independent experience. Safe environment.

Our residences offer you the chance to stay in a safe environment at the same time as experiencing life in the city. Like a hotel, you can get an en suite room to yourself and share the rest of the facilities with other Embassy students. You have lots of options including full board (all meals) or half board (breakfast and dinner) depending on what suits you best.

For a safe, independent stay our stylish residences will look after you in the heart of the city.

- Bright modern residences
- Fantastic city centre and on-campus summer locations
- Easy travel distance from the Study Centres
- Shared and single rooms
- Self-catering facilities, cafeteria and meal plan options
- Ensuite or budget shared facilities
- Lodges and backpackers options



# My Embassy life

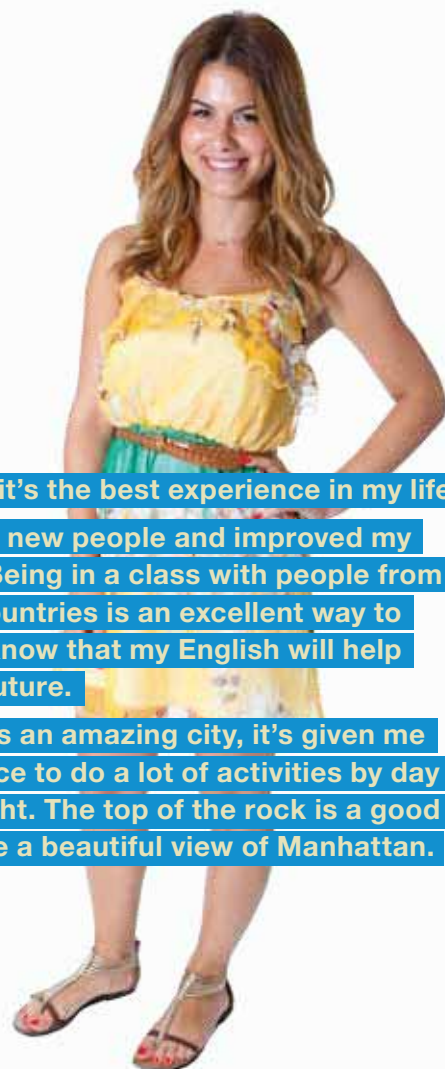
By following your personalised Study Plan, participating in challenging classes and using our learning management system, Study Smart, you can be sure that by the time Friday comes around you'll have gained considerably more skills and knowledge than you had on Monday.

I think that it's the best experience in my life.

I have met new people and improved my English. Being in a class with people from different countries is an excellent way to learn. I know that my English will help me in my future.

New York is an amazing city, it's given me the chance to do a lot of activities by day and by night. The top of the rock is a good place to see a beautiful view of Manhattan.

Silvia, Italy



The subway is so easy and convenient, it takes minutes to get into school



Lessons begin and the teachers are excellent, my teacher helped me put together my Study Plan and we discuss my progress



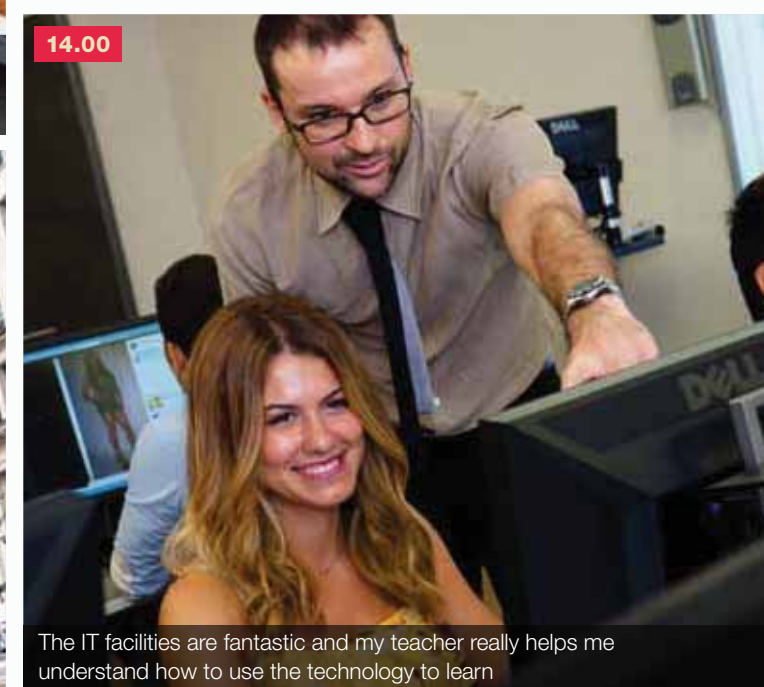
I love New York, there's so much to see and do, there's never any time to get bored



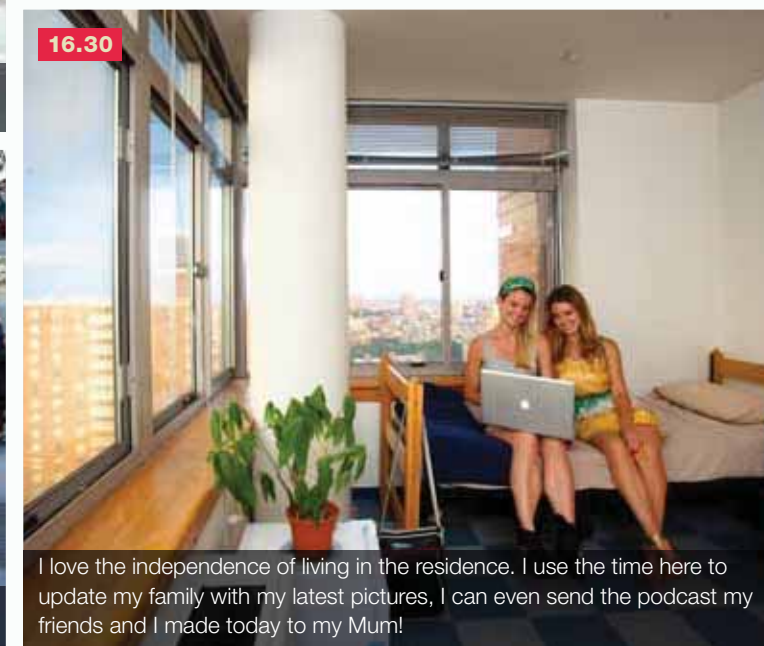
After class we sample some traditional New York street food before heading out to explore the city



Time to pop out for coffee and practise my new skills with friends



The IT facilities are fantastic and my teacher really helps me understand how to use the technology to learn



I love the independence of living in the residence. I use the time here to update my family with my latest pictures, I can even send the podcast my friends and I made today to my Mum!





Our teachers use technology to help you learn

# Teaching with technology

**96% OF OUR STUDENTS SAY THEY PREFER LEARNING WITH TECHNOLOGY**

Digital classrooms mean you'll be learning with the latest software and technology

**Learning a new language is about learning to communicate in a new way. 96% of our students say they prefer learning with technology as well as an experienced, helpful teacher. We use interactive, digital technology to help us achieve the highest standards in every class.**

## TEACHING WITH TECHNOLOGY:

**The teacher:** Our teachers are continuously trained in the latest technology and methods to help you learn better. They are all qualified and experienced in the use of digital technology.

**The interactive whiteboard:** The interactive whiteboard brings the real world into class. It is used to display audio, animation and online materials that help students engage with their coursework.

**Study Smart:** Study Smart is Embassy's online learning platform that integrates classwork with coursework, assignments and progress tests. Available to use before you arrive, you can access information and advice as well as assignments, practice tests and more. Study Smart monitors your progress from the day you start and after your course so you can see how much you have learned.

**E-portfolio:** Create an online portfolio of your work and save audio, video and text examples of your English. Monitoring your progress as you study, you can see when you meet goals and assess how you are doing. You can also collaborate on projects with your classmates and share with family, friends and more.

**Mobile learning:** WiFi-enabled classrooms mean that you can bring your smartphone, tablet, notebook or laptop to class. You can easily access the learning applications and digital course material.

**Digital course materials:** Embassy uses a structured curriculum to put you on a learning path towards success. We provide you with all the digital course materials you need.

Embassy lessons are high-tech and fun. One of the ways we use technology to help you learn English is through helping you create your own digital files. Your podcasts, surveys and animations can be shared online and used after the course ends.



Integrate class and course work and monitor your progress with Study Smart



WiFi-enabled classrooms mean you'll be able to bring your tablets, notebooks and laptops to use in lessons



# Our courses

## ACHIEVE SUCCESS

Improve your English and get a better job

Improve your English and go on to higher education

Improve your English and join the international community

General English

Long-term English

Business English

Exam preparation

## YOUR EMBASSY STUDY PLAN

	Study plan 1 Standard	Study plan 2 Intensive	Study plan 3 Long term
Flexible start / end dates	✓	✓	
Fixed start / end dates			✓
1 – 2 week fixed vacations			✓
Entry test & needs analysis	✓	✓	✓
Target setting	✓	✓	✓
Orientation & induction	✓	✓	✓
Core general English	✓	✓	✓
Core exam preparation			✓
Core business communication skills		✓	✓
Elective module speaking		✓	✓
Elective module exam prep		✓	
Elective module business communication skills		✓	
Additional 1-2-1 lessons	✓	✓	✓
Weekly progress test & review	✓	✓	✓
Monthly progress test & reports			✓
Monthly tutorials			✓
Learning plans	✓	✓	✓
Language portfolios			✓
Free university counselling & placement service			✓
Work assistance where appropriate			✓
Exit test	✓	✓	✓
Entry & exit language profile	✓	✓	✓
Certificate & report	✓	✓	✓

## OUR STUDENTS SAY...

"I am making good progress in my English"

90%

"The lessons are interesting and challenging"

86%

"I can get individual support from my teachers when I need it"

92%

"Teachers are knowledgeable and plan and give lessons effectively"

97%

"The course is meeting my needs"

90%

"The school is a safe and comfortable learning environment"

94%

"I would recommend Embassy English to other students"

94%

94% of our students would recommend Embassy English to other students

Anonymously completed student satisfaction questionnaire Q1 2013

## The Embassy Promise

If you don't progress to the next level as indicated on our progress chart, you can stay for free additional lessons until you do.\*

\* Applies to students who maintain full attendance and complete all homework and class assignments.

## YOUR PROGRESS

### A guide to levels and exams

Proficient user	C2	<b>Proficient</b> You can use English with ease and fluency. Improve by increasing your understanding of the nuances of the language and engaging in independent reading to develop your vocabulary further. IELTS 7-8 TOEFL iBT 102-114 TOEIC 901+ CAMBRIDGE CPE
	C1	<b>Advanced</b> You can use English in a range of culturally appropriate ways. Improve by extending your vocabulary and refining your use of style and register. IELTS 6-7 TOEFL iBT 79-101 TOEIC 751-900 CAMBRIDGE CAE
Independent user	B2	<b>Upper intermediate</b> You can use English effectively. Improve by learning to discuss, argue and express opinion in a culturally acceptable way. Refine your use of grammar and vocabulary. IELTS 5-6 TOEFL iBT 46-78 TOEIC 526-750 CAMBRIDGE FCE
	B1	<b>Intermediate</b> You can speak English with some confidence. Improve by developing your fluency, your understanding of grammar and by widening your vocabulary. IELTS 4-5 TOEFL iBT 32-45 TOEIC 401-525 CAMBRIDGE PET
Basic user	A2	<b>Pre-intermediate</b> You can communicate in a range of everyday social and travel contexts. Improve by developing your speaking, grammar and vocabulary. IELTS 3-4 TOEFL iBT 0-31 TOEIC 301-400
	A1	<b>Elementary</b> You can understand language used in everyday situations if the speaker speaks slowly and clearly. Improve by developing your listening and vocabulary. IELTS 2-3 TOEIC 151-300 CAMBRIDGE KET
	0	<b>Beginner</b> You can speak and understand English in a very limited way. IELTS 1-2 TOEIC 0-150

Guided learning in weeks	100					C1 Advanced (40 - 48 weeks)
	52					B2 Upper Intermediate (20 - 24 weeks)
	26				B1 Intermediate (14 - 16 weeks)	
	12			A2 Pre-intermediate (7 - 10 weeks)		
	5		A1 Elementary (4 - 6 weeks)			
	0	Beginner (4 - 6 weeks)				

Approximate number of weeks of classroom instruction needed to progress through each level



Use these icons to find your course

location availability



start dates



General English for travel



General English for social purposes



Business English for work & business



Academic English for academic purposes



WiFi-enabled classrooms for easy access to real world English and the internet



Interactive whiteboards in all classrooms using exclusive digital materials



Study Smart, our online resource for 24/7 access to course materials, homework, course assignments and progress tests

# General English

## Standard Programme

A structured programme to suit all levels, this course follows a general English syllabus and it is an ideal way to develop your speaking, listening, reading and writing skills for everyday use.

						maximum class size: <b>15</b> course length: <b>minimum 2 weeks</b> minimum entry level: <b>A1 Elementary</b> hours per week: <b>20 x 50-minute lessons</b>
Boston Fort Lauderdale Los Angeles New York San Diego San Francisco	Brighton Cambridge Hastings London Oxford	Toronto Victoria	Brisbane Melbourne Surfers Paradise Sydney	Auckland	every Monday	

### KEY FACTS

#### Course

- Flexible start / end dates
- Morning or afternoon classes according to school timetable
- Available at all levels A1 – C2
- Course materials and online supplementary coursework included
- Two to four lessons per week of your general English course will be undertaken in different formats, including guided lessons with Study Smart, lectures and project work, all of which have been designed to improve your learning
- Additional 1-2-1 lessons available (not included)

#### Syllabus

- Core modular general English programme

#### Progression

- Course orientation & induction
- Needs analysis & target setting
- Personalised learning plans

#### Assessment

- Entry & exit test
- Weekly progress test & review

#### Certification

- Language profile
- Certificate & report



The teachers are very good and the methods used by teachers help us learn quickly.  
The course is very dynamic. When I arrived I didn't speak English but now I can speak and understand.

Rodrigo, Brazil

## Travel and Culture

Spend your vacation improving your English and travelling the USA.

		maximum class size: <b>15</b> course length: <b>12 weeks max</b> minimum entry level: <b>A1 Elementary</b> hours per week: <b>20 x 50-minute lessons Monday to Thursday; classes on Friday optional</b>	
Boston Fort Lauderdale Los Angeles New York San Diego San Francisco	every Monday		

### KEY FACTS

#### 1 programme

- Morning or afternoon according to school timetable
- 16 x 50-minute core lessons, Monday to Thursday; classes on Friday optional
- USA locations only
- Enrol in the Travel and Culture Programme and come to the USA on a tourist visa or under the visa waiver programme. No student visa required
- Combine part-time study with a vacation in the USA
- Course materials and online supplementary coursework included




I can get a better job than before. I can keep studying English and that makes me have more chance to make international friends and work with foreign people.


Eui, South Korea





# Intensive Programme


This programme combines a core general English programme with electives. It enables you to study in more depth, to make faster progress and to customize your course. It is offered in two versions: Semi-intensive and Intensive.


  
Boston  
Fort Lauderdale  
Los Angeles  
New York  
San Diego  
San Francisco

  
Brighton  
Cambridge  
Hastings  
London  
Oxford

  
Toronto  
Victoria

  
Brisbane  
Melbourne  
Surfers  
Paradise  
Sydney

  
Auckland

  
every  
Monday

maximum class size: **15**  
course length: **2 x weeks minimum**  
minimum entry level: **Beginner**  
hours per week: **Semi-intensive**  
**24 x 50-minute lessons**  
**Intensive**  
**28 x 50-minute lessons**

### KEY FACTS

- Course**
- Two programmes: Semi-intensive and Intensive. Semi-intensive programme available only in Australia and New Zealand
  - Flexible start / end dates
  - Morning or afternoon classes according to school timetable
  - Available at all levels A1 to C2 and including Beginner level at specific locations: Boston, New York, San Francisco, Oxford, Hastings, Melbourne, Toronto
  - Course materials and online supplementary coursework included
  - Two to four lessons per week of your general English course will be undertaken in different formats, including guided lessons with Study Smart, lectures and project work, all of which have been designed to improve your learning
  - Additional 1-2-1 lessons available (not included)
  - Work assistance where appropriate
  - This is not a VET qualifying course in Australia

### Syllabus

- Core modular general English programme or core exam preparation or core business communication skills
- Elective modules

### Progression

- Course orientation & induction
- Needs analysis & target setting
- Personalised learning plans
- Monthly tutorials
- Language portfolios

### Assessment

- Entry & exit test
- Weekly progress test & review
- Monthly progress test & reports

### Certification

- Language profile
- Certificate & report



The lessons are amazing. I learn a LOT –  
I feel like now I CAN speak English, real  
English – the pronunciation, the grammar.  
I feel so much more confident about speaking.  
Luciana, Brazil

### ELECTIVES

Semi-intensive & Intensive programmes

- Semi-intensive** 1 elective (total 4 x 50-minute lessons)
- Intensive** 2 electives (total 8 x 50-minute lessons)

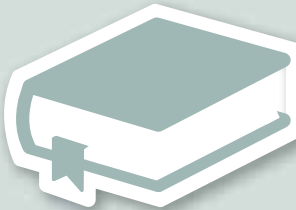
- Maximize your progress
- Concentrate on a specific objective
- Develop a special interest
- Change elective every 4 weeks

#### GRAMMAR PRACTICE



Additional grammar practice 4 x 50-minute lessons a week

#### VOCABULARY EXTENSION



Vocabulary extension 4 x 50-minute lessons a week

#### SPEAKING – CONVERSATION SKILLS



Speaking – conversation skills 4 x 50-minute lessons a week

#### SPEAKING – PRESENTATION SKILLS



Speaking – presentation skills 4 x 50-minute lessons a week

#### EXAM PREPARATION



Exam preparation: IELTS, TOEFL, FCE 8 x 50-minute lessons a week (see page 26 - 27)

#### BUSINESS COMMUNICATION SKILLS




Business communication skills 8 x 50-minute lessons a week (see page 22-23)




# Long-term English

## Language Year Abroad


A long-term general English course – the perfect solution for students looking to gain fluency during a gap year of study abroad. This course is the most cost-effective way to improve your English.




Boston  
Fort Lauderdale  
Los Angeles  
New York  
San Diego  
San Francisco




Brighton  
Cambridge  
Hastings  
London  
Oxford



Toronto  
Victoria



Brisbane  
Melbourne  
Sydney



6 Jan – 21 Mar  
31 Mar – 13 Jun  
30 Jun – 12 Sep  
22 Sep – 5 Dec

maximum class size: **16, (18 in Australia)**  
course length: **One to four terms**  
minimum entry level: **A2 Pre-intermediate**  
hours per week: **Standard programme 20 x 50-minute lessons**  
**Intensive programme 28 x 50-minute lessons**

### KEY FACTS

- Course**
  - Flexible start / end dates
  - 1 – 2 week fixed vacations
  - Standard & Intensive programmes
  - Morning or afternoon classes according to school timetable
  - Course materials and online supplementary coursework included
  - Additional 1-2-1 lessons available (not included)
  - University pathway counselling
- Syllabus**
  - Work assistance where appropriate
  - Core modular general English programme or core exam preparation or core business communication s kills
  - Elective modules
- Progression**
  - Course orientation & induction
  - Needs analysis & target setting
  - Personalised learning plans
- Assessment**
  - Monthly tutorials
  - Language portfolios
  - Entry & exit test
  - Weekly progress test & review
  - Monthly progress test & reports
- Certification**
  - Language profile
  - Certificate & report

### PROGRESSION

Choose from one to four terms to suit your required outcomes

Entry level & course length	A2	B1	B2	B2+*	C1
A2 x 2 terms	pre-intermediate	intermediate			
A2 x 3 terms	pre-intermediate	intermediate	upper intermediate		
A2 x 4 terms	pre-intermediate	intermediate	upper intermediate	Exam prep e.g. FCE, IELTS, TOEFL	
B1 x 2 terms		intermediate	upper intermediate		
B1 x 3 terms		intermediate	upper intermediate	Exam prep e.g. FCE, IELTS, TOEFL	
B2 x 2 terms			upper intermediate	Exam prep e.g. FCE, IELTS, TOEFL	
B2+ x 3 terms			upper intermediate	Exam prep e.g. FCE, IELTS, TOEFL	Advanced
C1 x 2 terms					Advanced Exam prep e.g. CAE, IELTS, TOEFL

\*The 'plus' levels, e.g. B2+, are half levels, similar to the IELTS 0.5 classification

TECHNOLOGY ENABLED




A long-term (course) works really well, because I can definitely notice the progress week by week.  
Daniel, Brazil




See the Learning Portfolio online

## English for Academic Purposes


Intensive English language training with academic study skills development for students wishing to pursue university and further education courses in Australia, Canada, UK, and USA.




Boston  
Los Angeles  
New York




Cambridge



Toronto  
Victoria



Brisbane  
Melbourne  
Sydney



see below

maximum class size: **16, (18 in Australia)**  
course length: **one to four terms depending on entry and exit level required (see table below)**  
minimum entry level: **B1 Intermediate**

### KEY FACTS

#### Entry Requirements

Language level	CEFR	IELTS	TOEFL iBT
Stage 1	B1+*	4.5	32 – 34
Stage 2	B2	5.0	35 – 45
Stage 3	B2+	5.5	46 – 59
Stage 4	C1	6.0	60 – 78

#### Syllabus

- Combines intensive language development with study skills training – five modules per term: reading, writing, listening, speaking and study skills
- Level of challenge increases as the course progresses
- IELTS or TOEFL exam preparation skills training
- Course materials included
- Certificate of Achievement, awarded by Academic Board

#### Assessment

- Entry test on arrival
- Continuous assessment via classwork and course assignments: two essays, oral presentation and research report
- Mid-term and end of term tutorials and progress reports
- Exit test on completion

#### Embassy Pathways

(see Embassy Pathways brochure)

- Embassy pathways for students intending to pursue university and further education in Australia, Canada, UK, and USA
- Successful completion of this course guarantees entry into one of our university or educational partners without having to take an IELTS or TOEFL exam
- Expert guidance through our university partners' academic admissions process provided prior to enrolment on this course

#### Course dates

Australia		Canada, UK, USA
Jan 6 – Mar 14	Jun 30 – Sep 5	Jan 6 – Mar 21
Feb 10 – Apr 18	Aug 4 – Oct 10	Mar 31 – Jun 13
Mar 17 – May 23	Sep 8 – Nov 14	Jun 30 – Sep 12
Apr 21 – Jun 27	Oct 13 – Dec 19	Sep 22 – Dec 5
May 26 – Aug 1	Nov 17 – Jan 30 2015	

#### Entry level & course length

Entry level & course length	B1+ IELTS 4.5 TOEFL 32-34	B2 IELTS 5.0 TOEFL 35-45	B2+ IELTS 5.5 TOEFL 46-59	C1 IELTS 6.0 TOEFL 60-78
B1+ x 2 terms	Stage 1	Stage 2		
B1+ x 3 terms	Stage 1	Stage 2	Stage 3	
B2 x 2 terms		Stage 2	Stage 3	
B2 x 3 terms		Stage 2	Stage 3	Stage 4
B2+ x 2 terms			Stage 3	Stage 4


\*The 'plus' levels are similar to the IELTS half levels




# Business English

## Business Communication Skills


This course will improve your business English communication skills.




Boston  
Fort Lauderdale  
Los Angeles  
New York  
San Diego  
San Francisco




Brighton  
London  
Oxford



Toronto  
Victoria



Brisbane  
Surfers  
Paradise  
Sydney  
Melbourne



every Monday

maximum class size: **15**  
course length: **2-12 weeks**  
entry level BSC: **B1 Intermediate**  
entry level BE: **B1 Intermediate**  
hours per week: **Intensive programme 28 x 50-minutes**

KEY FACTS

Course

- Start every Monday
- Two programmes: Intensive and Elective
- Intensive: Oxford, London, San Francisco, New York, Boston, Melbourne, Sydney
- 20 x 50-minute core Business communication skills lessons
- 8 x 50-minute general English elective lessons
- Elective programme (see page 19): Brighton, Los Angeles, Fort Lauderdale, San Diego, Victoria, Toronto, Surfers Paradise
- 20 x 50-minute core general English lessons
- 8 x 50-minute business communication skills lessons
- Course materials and online supplementary coursework included
- This is not a VET qualifying course in Australia

Syllabus

- Core business communication skills
- Elective business communication skills modules

Progression

- Course orientation & induction
- Needs analysis & target setting
- Personalised learning plans
- Monthly tutorials
- Language & business portfolios

Assessment


- Entry & exit test
- Weekly progress test & review
- Monthly progress test & reports

Certification


- Language & business profile
- Certificate & report

## Power Speaking

Develop fluency, power and effective communication and presentation skills on this dynamic course.



Toronto  
Victoria



every Monday

maximum class size: **15**  
course length: **4-12 weeks**  
minimum entry level: **B1 Intermediate**  
hours per week: **Intensive programme 28 x 50-minute lessons**

KEY FACTS

Course

- Flexible start / end dates
- Complement to work experience programmes (see page 23)
- Course materials and online supplementary coursework included
- One programme: Intensive
- 20 x 50-minute core power speaking lessons
- 8 x 50-minute general English elective lessons (see page 17)

Syllabus

- Core effective communication skills

Progression

- Course orientation & induction
- Needs analysis & target setting
- Personalised learning plans
- Language & business portfolios

Assessment

- Entry & exit test
- Weekly progress test & review
- Monthly progress test & reports

Certification

- Language profile
- Certificate & report



The teachers here give you the power to speak, to know your mistakes and correct them. In the past, I was shy, I thought maybe people would think that my language was bad, but now I speak to everyone. Now I can use tenses properly!  
Ammar, Kuwait





It's a good thing to have on your CV and it  
will be a great advantage in the work life.

Erik, Sweden

## English in Action (USA)

Improve your English language skills in a real-world environment after completing your studies.

A structured programme of a general English intensive course, personalised skills workshops and a placement in a business, community organisation or educational setting.



Boston, Fort  
Lauderdale, Los  
Angeles, New York,  
San Diego,  
San Francisco



every Monday with  
intensive English  
course

maximum class size: **15**  
course length: **minimum 4 weeks**  
placement length: **4-8 weeks**  
minimum age: **21**  
minimum entry level: **B1 Intermediate**  
exit level: **B2+**

### KEY FACTS

#### Intensive programme

- Morning and/or afternoon
- 20 x 50-minute core lessons
- 8 x 50-minute English electives

#### Placement programme

- 4 or 8-week placement upon completion of your English course and during the 60 days you are allowed to remain in the country (in accordance with student visa requirements)
- An oral test with centre staff is required before you can be accepted into the course. This interview is usually conducted by telephone
- Skills workshops before your placement to prepare you for an authentic English environment outside the classroom
- Previous work experience not required but is an advantage
- Students must reach level B2 to be granted access to the placement
- Study Care insurance is mandatory during the placement

#### Sample placements

Legal: **Weingrad & Weingrad**  
Travel: **Adams Unlimited**  
Business: **BMW**  
Hospitality: **Hilton DoubleTree Hotel**  
Import/Export: **UPS**

## English Language Co-op Programme

Improve your English language skills in a Canadian work setting after completing your studies.



Toronto  
Victoria



every Monday

maximum class size: **15**  
course length: **32-48 weeks**  
(work period must not exceed study period)

minimum age: **18**  
entry level: **any**  
exit level: **B2+**

A structured programme of general English, job readiness workshops and a paid self-placed work co-op.

### KEY FACTS

#### 2 programmes

##### Standard programme

- Morning and/or afternoon according to school timetable
- 20 x 50-minute core lessons

##### Intensive programme

- Morning and afternoon
- 20 x 50-minute core lessons
- 8 x 50-minute general English elective lessons (see page 19)

##### Work component

- Minimum of 80% attendance in order to begin the work component
- Previous work experience not required but is an advantage
- Work placements typically entry-level jobs in the customer-service industry
- Compensation dependent upon the employer (typically minimum wage, based on provincial employment standards)
- Study permit and work permit required




The most interesting thing is a presentation  
in the class. All of the students did presentation.  
So I could get information of other country  
and I could make various national friends.  
Hye, South Korea




# Exam preparation


## IELTS




Brighton  
Cambridge  
London  
Oxford



Brisbane,  
Melbourne  
Surfers  
Paradise,  
Sydney



Auckland




every Monday


maximum class size: **15**  
course length: **4 weeks minimum**  
entry level: **B1 Intermediate**

- KEY FACTS**
- 2 programmes**
- IELTS intensive programme**
- Morning and/or afternoon according to school timetable
  - 20 x 50-minute core IELTS preparation lessons
  - 8 x 50-minute lessons of your choice (see page 18)
  - London, Oxford, Brisbane, Melbourne, Surfers Paradise, Sydney
- General English elective programme (IELTS preparation) see page 18**
- Morning and/or afternoon according to school timetable
  - 20 x 50-minute core general English lessons +
  - 8 x 50-minute IELTS preparation elective lessons
  - Cambridge, Brighton, London
  - Brisbane, Melbourne, Surfers Paradise, Sydney and Auckland


## TOEFL



Boston, Fort  
Lauderdale,  
Los Angeles,  
New York,  
San Diego,  
San Francisco



Toronto  
Victoria




every Monday


maximum class size: **15**  
course length: **4 weeks minimum**  
entry level: **B1 Intermediate**

- KEY FACTS**
- 2 programmes**
- TOEFL intensive programme**
- Morning and/or afternoon according to school timetable
  - 20 x 50-minute core TOEFL preparation lessons
  - 8 x 50-minute lessons of your choice (see page 18)
  - Boston, New York, San Francisco
- General English exam elective (TOEFL preparation) see page 18**
- Morning and/or afternoon according to school timetable
  - 20 x 50-minute core general English lessons
  - 8 x 50-minute TOEFL preparation elective lessons
  - Fort Lauderdale, Los Angeles, San Diego, Toronto, Victoria


## Cambridge ESOL FCE & CAE




New York  
San Diego  
San Francisco




Brighton  
Cambridge  
Oxford



Sydney  
Melbourne



Auckland



see below

maximum class size: **15**  
course length: **10 weeks**  
entry level: **FCE: B1 Intermediate**  
**CAE: C1 Advanced**

- KEY FACTS**
- 2 programmes**
- Cambridge intensive programme**
- Morning and/or afternoon according to school timetable
  - 20 x 50-minute core Cambridge preparation lessons
  - 8 elective lessons (see page 18)
  - Brighton, Cambridge, Oxford, New York, San Diego, Sydney, Melbourne
  - Sydney 28 x 50-minute Cambridge preparation lessons
- General English elective programme (Cambridge preparation) see page 18**
- Morning and/or afternoon according to school timetable
  - 20 x 50-minute core general English lessons
  - 8 x 50-minute Cambridge exam preparation elective lessons
  - Auckland, San Francisco

	Jan	Mar	June	Sept
Auckland		FCE		FCE
Brighton	FCE	FCE		FCE
Cambridge	FCE/CAE	FCE/CAE		FCE/CAE
Melbourne	FCE	FCE	FCE	FCE
New York	FCE/CAE	FCE/CAE		FCE/CAE
Oxford	FCE	FCE/CAE		FCE/CAE
San Diego	FCE/CAE	FCE/CAE		FCE/CAE
San Francisco	FCE/CAE	FCE/CAE		FCE/CAE
Sydney	FCE/CAE	FCE/CAE	FCE/CAE	FCE/CAE

**EXAM PREPARATION COURSES: IELTS, TOEFL, CAMBRIDGE ESOL**

- Course**
- Course materials and online supplementary coursework included
  - Exam booking
  - Additional 1-2-1 lessons available (not included)

- Syllabus**
- Core exam preparation and exam skills training
  - Elective modules

- Progression**
- Course orientation & induction
  - Needs analysis & target setting
  - Personalised learning plans
  - Progress tutorials

- Assessment**
- Entry & exit test
  - Weekly progress test & review
  - Mid-term progress tests
  - Practice tests and mock exams

- Certification**
- Language profile
  - Certificate & report

COURSE DATES		
Jan 6 – Mar 7	9 weeks	FCE
Jan 6 – Mar 14	10 weeks	CAE
Mar 31 – Jun 6	10 weeks	FCE/CAE
Jun 16 – Aug 22	10 weeks	FCE/CAE
Sept 22 – Nov 28	10 weeks	FCE/CAE



The Cambridge course has been so helpful. It really taught me to increase my skills in every situation. It took my English to the next level. Everything I've learned can be applied in my university life next year, which is completely in English as well.

Romadhon, Holland



# Your location

Embassy Study Centres are located in some of the best cities, seaside towns and historical centres around the world to offer you the most out of your English language experience.

Course	General English Standard Programme	General English Intensive Programme	General English Beginners level	General English Semi-intensive (Australia)	Travel and Culture	Power Speaking Intensive Programme	EAP English for Academic Purposes	Language Year Abroad	Business Communication Skills	English in Action	English Language Co-op	Cambridge FCE Intensive	Cambridge CAE Intensive	General English + Cambridge Exam Electives	IELTS Intensive	General English + IELTS Elective	TOEFL Standard	TOEFL Intensive	General English + TOEFL Electives
Oxford	•	•	•					•	•			•	•		•	•			
London	•	•	•					•	•			•	•		•	•			
Cambridge	•	•					•	•				•	•			•			
Hastings	•	•	•					•											
Brighton	•	•						•	•			•				•			
Los Angeles	•	•			•		•	•	•	•									•
San Francisco	•	•			•			•	•	•				•					•
Fort Lauderdale	•	•			•			•	•	•							•	•	•
San Diego	•	•	•		•			•	•	•		•	•						•
New York	•	•	•		•		•	•	•	•		•	•				•	•	
Boston	•	•	•		•		•	•	•	•							•	•	
Victoria	•	•				•	•	•	•		•								•
Toronto	•	•	•			•	•	•	•		•								•
Melbourne	•	•	•	•			•	•	•			•			•	•			
Sydney	•	•		•			•	•	•			•	•		•	•			
Surfers Paradise	•	•		•					•						•	•			
Brisbane	•	•		•			•	•	•						•	•			
Auckland	•	•		•					•					•	•				

The teachers at Embassy are the best I've ever had in my life. There's a lot of interaction between the teachers and us. They all have very different approaches to teaching, but they all give a good overall feeling of how to learn. I will definitely recommend Embassy!

Diane, France



There are five Embassy Study Centres in the UK and the location of each one was chosen to give you the best student experience.

Whether you want to stay in the artistic, seaside towns of Brighton and Hastings, the iconic, ancient university centres of Oxford and Cambridge or simply the most famous city in the world, London – Embassy has a place for you.



The excitement of the big city in London



Brighton, the city by the sea



Ancient monument at Stonehenge



The last surviving tea clipper, the Cutty Sark



The 16th-century Divinity School, now part of the Bodleian Library in Oxford





# Oxford

**In the centre of Oxford surrounded by historic university buildings, this beautiful campus offers a modern study environment with a variety of convenient residential accommodation nearby.**

Bright and spacious student lounge



Latest technology in the classroom



Social space in Oxford

## ACCOMMODATION

### RESIDENTIAL

- walking distance from school (minimum age 18)
- single and twin rooms en suite
- self-catering

### HOMESTAY

Available across the Oxford area.

- single and twin rooms
- half-board (14 meals)
- bed and breakfast option (age 18+)

## FACILITIES

- WiFi-enabled
- IT suite
- interactive whiteboards
- resource centre
- student lounge

- university counselling
- city centre location
- extensive programme of activities
- weekend excursions to other cities in the UK and Europe

## COURSES

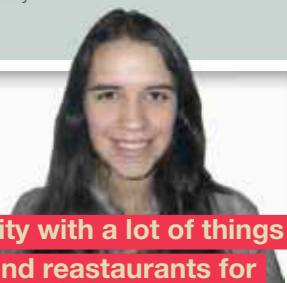
- General English
- Beginners to Advanced
- Business Communication Skills (core)
- Exam Preparation: FCE, CAE, IELTS (Elective)
- Language Year Abroad
- One-to-one lessons
- Beginners accepted

**Oxford is a lovely city with a lot of things to do with pubs, clubs and restaurants for every taste. I'll never forget the people I met here, friends, teachers, staff, everyone was really friendly.**  
**Kamilia, Brazil**

## NEAR THE SCHOOL



- 1 Ashmolean Museum of Art and Archaeology
- 2 Magdalen Bridge Boathouse – go punting
- 3 Bodleian Library – one of the oldest in Europe
- 4 Covered Market – great shopping
- 5 Radcliffe Camera – a beautiful old circular library



**Modern and purpose-built this spectacular campus features a large library and on-site residences. You have easy access to central London, but can also get the space you need to study with green parks and the historic borough of Greenwich nearby.**

## ACCOMMODATION

### RESIDENTIAL

**Available year-round NEW!**

Located next to our school, the residence provides friendly and safe accommodation where you'll live alongside British students.

- minimum age 16
- single rooms
- en suite
- self-catering and half-board at school canteen (14 meals per week)

### HOMESTAY

Available across the London area.

- single and twin rooms
- half-board (14 meals per week)
- bed and breakfast option (age 18+)

## FACILITIES

- WiFi-enabled
- IT suite
- interactive whiteboards
- student lounge
- university counselling
- library
- cafeteria
- extensive programme of activities
- weekend excursions to other cities in the UK and Europe

## COURSES

- General English
- Business Communication Skills (core)
- Exam preparation: IELTS Intensive (electives and core)
- Language Year Abroad
- One-to-one lessons



**London is a spacious and magnificent city. I love it.**

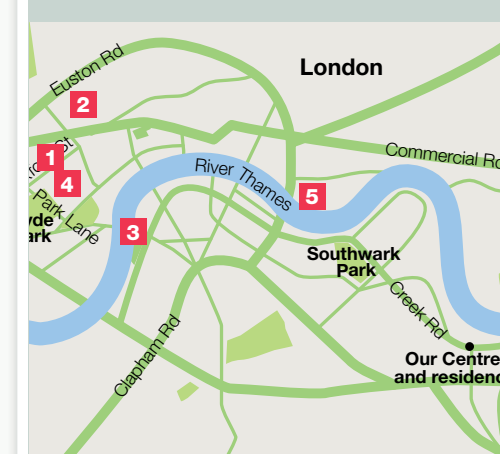
**The centre is located in a good place not far from Greenwich. All the facilities are brand-new, there are electronic white boards which can raise efficiencies of studying.**

**Minseok, South Korea**



The Royal Naval College and Greenwich

## NEAR THE SCHOOL



- 1 Oxford Street shopping
- 2 Covent Garden
- 3 London Eye
- 4 Buckingham Palace
- 5 Tower of London



Contemporary centre with modern facilities





# Cambridge

Bright, modern classrooms



Fully equipped IT suite



Bright and comfortable student lounge

**Centrally located with great student spaces and a friendly school atmosphere, the school is surrounded by prestigious university buildings and is a short cycle ride to all the historic attractions of this world famous city.**

## ACCOMMODATION

### RESIDENTIAL

Our modern residence is a short cycle ride away.

- minimum age 16 in summer, 18 year-round
- single rooms
- en suite
- shared kitchen facilities for self-catering

### HOMESTAY

Available across the Cambridge area.

- single rooms (twins available in summer) half-board (14 meals per week)
- travel to school by bus or bicycle

## FACILITIES

- WiFi-enabled
- IT suite
- interactive whiteboards
- university counselling
- cafeteria
- courtyard and gardens
- extensive programme of activities
- weekend excursions to other cities in the UK and Europe

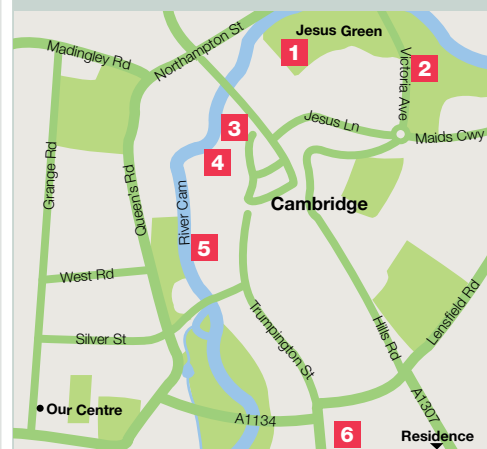
## COURSES

- General English
- English for Academic Purposes
- Exam preparation: FCE, CAE, IELTS Elective
- Language Year Abroad
- One-to-one lessons

**I like the historical buildings in Cambridge. When I first came here I couldn't speak any English but now I can share everything with other students.**

Shila, Iran

## NEAR THE SCHOOL



- 1 Jesus Green
- 2 Midsummer Common – enjoy a game of football with friends
- 3 Trinity College
- 4 Punting on the River Cam
- 5 Kings College – hear the famous choir of Kings College
- 6 Fitzwilliam Museum



Our centre



Comfortable student lounge



Bright and fully equipped IT suite

Large, spacious classrooms

# Hastings

**The Study Centre is located in a charming restored Victorian building close to the picturesque seafront and old town centre. With a family atmosphere and lots of character, you'll feel at home in Hastings.**

## ACCOMMODATION

### HOMESTAY

Available across the Hastings area.

- single and twin rooms
- half-board (14 meals per week)

## FACILITIES

- WiFi-enabled
- IT suite
- interactive whiteboards
- student lounge
- games room
- university counselling

- attractive grounds
- cafeteria
- extensive programme of activities
- weekend excursions to other cities in the UK and Europe

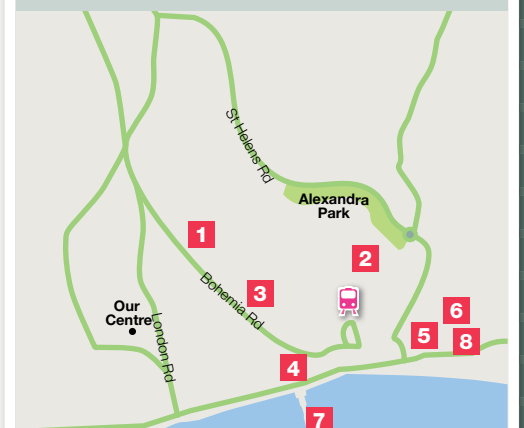
## COURSES

- General English
- Language Year Abroad
- One-to-one lessons
- Beginners accepted



**My time here was happy, funny interesting. I like Hastings, there is so much culture here. I like the beach, the Old Town and the castle. I want to come back.**  
Katya, Slovakia

## NEAR THE SCHOOL



- 1 Summer field cricket ground
- 2 Linton Gardens
- 3 Hastings Museum
- 4 White Rock Gardens and Theatre
- 5 Hastings old town – step back in time
- 6 Hastings Castle
- 7 Hastings Pier
- 8 St. Mary in the Castle – one of Hastings' finest monuments





# Brighton

The Brighton Study Centre is light and modern, with a high standard of design and high-tech classrooms throughout. Located in the heart of this vibrant seaside city, the Study Centre is within easy walking distance of the sea, cafés, and great shops. Make the most of your experience in our modern residences.

## ACCOMMODATION

### RESIDENTIAL

There are two residence options available in the summer only. Voyager House is located in a popular area of Brighton.

Our year-round residence is a stylish study hotel and for summer, on-campus and nearby residences offer self-catering or half-board options.

- single rooms
- en suite
- cafeteria in Brighton Study Centre for half-board meal plan

Additional residential beds are also available at the Study Centre.

- single and twin rooms
- en suite
- cafeteria

### HOMESTAY

Available across the Brighton area.

- single and twin rooms
- half-board (14 meals)
- bed and breakfast option (age 18+)

## COURSES

- General English
- Business Communication skills (elective)
- Exam preparation: FCE (core) IELTS (electives)
- Language Year Abroad
- One-to-one programmes

## FACILITIES

- WiFi-enabled
- IT suite
- interactive whiteboards
- student lounge
- university counselling in mother tongue
- cafeteria
- nurse available every day
- extensive programme of activities
- weekend excursions to other cities in the UK and Europe

The Embassy Brighton school is very modern and the technology is good. Right from the beginning it has been FUN to go to lessons. In Brighton you can walk everywhere; it has everything you need, many shops and pubs and things to do.

Liane, Germany



Modern IT suite



Technology in the classroom

## NEAR THE SCHOOL



- 1 Devil's Dyke – an outstanding natural beauty spot
- 2 North Laine – great boutique shopping
- 3 Royal Pavilion and Dome
- 4 The Lanes – historic shopping quarter
- 5 Sealife Centre
- 6 Brighton Pier
- 7 Odeon 8-screen cinema

San Francisco

Los Angeles  
San Diego

Boston  
New York

Fort Lauderdale

# USA

Geographically diverse and culturally rich, it's no wonder the USA attracts some of the top students in the world. From the laid-back beach-side cities to the iconic brownstone centres of the east coast, Embassy Study Centres are the perfect cool and comfortable place for your American dream to come true.



The Golden Gate Bridge in San Francisco



Enjoy all that New York has to offer



Experience nature up close in the Everglades





Our recently refurbished centre

The Los Angeles Study Centre is located in the lively community of Long Beach. An open plan design and a friendly atmosphere make the Study Centre spacious and welcoming.

# Los Angeles

## ACCOMMODATION

### RESIDENTIAL

The residence is steps from the beach with student lounges and common areas. Each room features a balcony overlooking the pool and bbq area.

- minimum age 16
- twin room
- en suite
- self-catering
- fridge and microwave in room

### HOMESTAY

Available across the Los Angeles and Long Beach area.

- single and twin rooms
- half-board (14 meals)

## FACILITIES

- WiFi-enabled
- IT suite
- interactive whiteboards
- student lounge
- activities
- university counselling
- courtyard
- roof terrace
- bus and trams to popular LA attractions

## COURSES

- General English
- Business Communication skills (elective)
- English in Action
- English for Academic Purposes
- Exam preparation: TOEFL (electives)
- Language Year Abroad
- Travel and Culture Programme
- One-to-one lessons



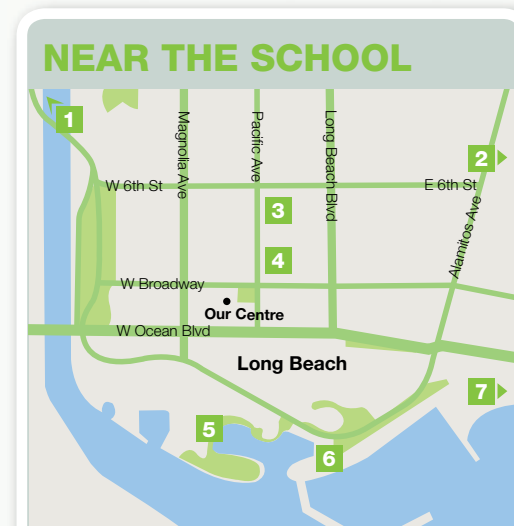
Centre exterior



IT suite

LA is great, the weather, is always good and it's a big city. I improved my English a lot and learned different culture from everybody.

Chi, Taiwan



- 1 Hollywood and downtown LA – 30 minutes from the Study Centre
- 2 Disneyland – 40 minutes from the Study Centre
- 3 City Place Shopping Centre
- 4 Pine Avenue – restaurants and clubs
- 5 Long Beach Aquarium
- 6 Shoreline Village – restaurants near the Queen Mary
- 7 Belmont Shore – a charming beachside community



Modern communal areas

## NEAR THE SCHOOL



- 1 Fisherman's Wharf
- 2 North Beach – great Italian dining
- 3 Union Square – a great shopping experience
- 4 The Museum of Modern Art
- 5 AT&T Park – home of the Giants baseball team
- 6 The Castro – San Francisco's alternative culture

## ACCOMMODATION

### RESIDENTIAL

Our residence options are within easy reach of the school.

- minimum age 16
- single and twin rooms
- en suite and shared bathrooms
- half-board and self-catering

### HOMESTAY

Available across San Francisco.

- single and twin rooms
- half-board (14 meals)

## FACILITIES

- centrally located
- WiFi-enabled
- IT suite
- interactive whiteboards
- student lounge
- activities
- university counselling
- close to historic neighbourhoods

## COURSES

- General English
- Business Communication Skills (core)
- English in Action
- Exam preparation: FCE and CAE (electives) TOEFL (core)
- Language Year Abroad
- One-to-one lessons
- Travel and Culture Programme



Our centre



Bright, modern classrooms

A block from Union Square, overlooking Market Street, the San Francisco Study Centre is Embassy's best kept secret. High-tech and very stylish, this centre overlooks the city with amazing views in the heart of downtown.



The facilities at the centre are very nice and very cool, there are many media options to help you learn. We went to Alcatraz and this was great, I practise English all the time.

Nestor, Mexico





Our modern reception



Light and comfortable student lounge



Facilities are great and modern, the classrooms are really good. Fort Lauderdale is a good place, it is well located, near Miami and the Caribbean. The city itself is very organised and beautiful. The beach is stunning.  
Felipe, Brazil

# Fort Lauderdale

Sunny and laid back, Fort Lauderdale is perfect for a learning holiday. With a large student area, wide-screen TVs and lots of open space, this is a truly American centre. The high-tech Study Centre is at the heart of the city, with beaches close-by and great residential options.

### ACCOMMODATION

#### RESIDENTIAL

- Two main options across from the ocean and a 20-minute bus ride from the school. Facilities include: air conditioning, cable TV, laundry and a swimming pool.
- minimum age 16
  - single and twin apartment rooms
  - en suite
  - self-catering

#### HOMESTAY

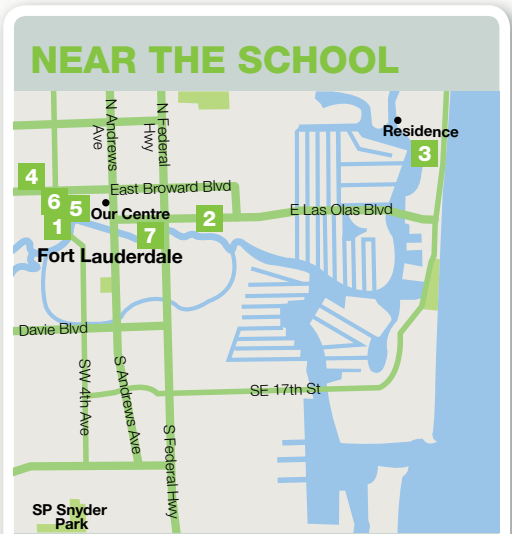
- Available across the Fort Lauderdale area.
- Guaranteed native or near-native English-speaking host
  - single and twin rooms
  - half-board (14 meals)

### FACILITIES

- WiFi-enabled
- IT suite
- interactive whiteboards
- activities
- university counselling
- residence with pool
- close to the beach

### COURSES

- General English
- Business Communication skills (elective)
- Exam Preparation: TOEFL (electives)
- Language Year Abroad
- One-to-one lessons
- Travel and Culture Programme



- 1 Broward Centre for Performing Arts
- 2 Las Olas Boulevard
- 3 Fort Lauderdale beach
- 4 Himmarshee Street
- 5 Museum of Discovery and Science
- 6 Fort Lauderdale Museum of Art
- 7 Riverfront cruises and water taxi



### NEAR THE SCHOOL



- 1 Old town historic district
- 2 Harbour tours
- 3 Gaslamp District – historic quarter
- 4 Coronado Beach
- 5 Seaport Village
- 6 Horton Plaza – shopping mall

### ACCOMMODATION

#### RESIDENTIAL

- Our residence options are walking distance from the Study Centre.
- minimum age 18
  - single and twin rooms
  - private and shared bathrooms
  - self-catering
  - single en suite studios with kitchenettes also available (age 18+)

#### HOMESTAY

- Available across the San Diego area.
- single and twin rooms
  - half-board (14 meals)

### FACILITIES

- Roof-top terrace
- WiFi-enabled
- IT suite
- interactive whiteboards
- activities
- university counselling
- excellent transport links
- short distance from beach

### COURSES

- General English
- **Beginner level available**
- Business Communication skills (elective)
- Exam preparation: FCE and CAE (Core), TOEFL (electives)
- Language Year Abroad
- One-to-one lessons
- Travel and Culture Programme



San Diego is an amazing city. The weather is perfect, people are very friendly and easy going, beautiful beaches, good public transportation and it is really difficult to get lost.

Jorge, Brazil



DISCOUNT FOR  
EMBASSY STUDENTS



# Next Stop: New York!

**Extend your Embassy experience in the Big Apple. Now is your chance to visit New York before, during or after your Embassy course.**

**THE NEW YORK TOUR WEEK**  
One week of accommodation at the Embassy New York Residence includes:

- Daily breakfast
- A 7-day MTA MetroCard
- Smart Destinations package: 7 New York attractions admissions
- Return airport transfer

**THE EMBASSY NEW YORK RESIDENCE**  
**Embassy New York Residence in Manhattan:** Experience American student life in the lively student area by Columbia University. Enjoy the bars, coffee shops and restaurants 20 minutes by subway from Times Square.

- Located in Upper Manhattan by Columbia University
- Single and twin rooms
- Free wireless internet
- Shared bathrooms



**TRAVEL FACTS:**  
(BOOK EARLY FOR GREAT FARES)

Toronto to NY: **2 hours**  
California to NY: **4.5 hours**  
Fort Lauderdale to NY: **3 hours**  
Boston to NY: **3 hours by train**

See more of our school online



Bright classrooms with great city views



IT info bar in the student lounge



Great facilities in the IT suite

## NEAR THE SCHOOL



- 1 Museum Mile – home of the Met, Guggenheim and many more
- 2 Radio City Music Hall
- 3 Times Square
- 4 Empire State Building
- 5 World Trade Centre Memorial
- 6 Ellis Island
- 7 Statue of Liberty
- 8 Residence (25 mins north)



Is a good school, perfect location, I recommend totally studying in Embassy. New York City is the most exciting city I've ever been to. You can do a lot of things and learn so much about other cultures because this is a multicultural city.

Mauricio, Colombia

# New York

**Embassy's flagship North American Study Centre has great, high-tech classrooms and spacious student lounges. Our New York Study Centre features a residence in Manhattan near Columbia University so you can experience city life like a local. Within walking distance of the Empire State Building, Madison Square Garden and Times Square, you can have a space of your own in the city that never sleeps.**

## ACCOMMODATION

### RESIDENTIAL

Our bright, modern Manhattan residence, only a 25-minute direct subway ride from the Study Centre, offers 24-hour security, an exercise room, laundry facilities, comfortable lounges with cable television.

- minimum age 16
- single and twin rooms
- shared bathrooms

### HOMESTAY

Located in Long Island, New Jersey, Queens and Brooklyn.

- single rooms
- half-board (14 meals)
- bed and breakfast (age 18+)

## FACILITIES

- WiFi-enabled
- IT suite
- interactive whiteboards
- student lounge
- activities
- university counselling
- Manhattan residence

## COURSES

- General English
- **Including Beginner level**
- Business Communication Skills (core)
- English in Action
- English for Academic Purposes
- Exam preparation: FCE and CAE (core) TOEFL (core)
- Language Year Abroad
- One-to-one lessons
- Travel and Culture Programme

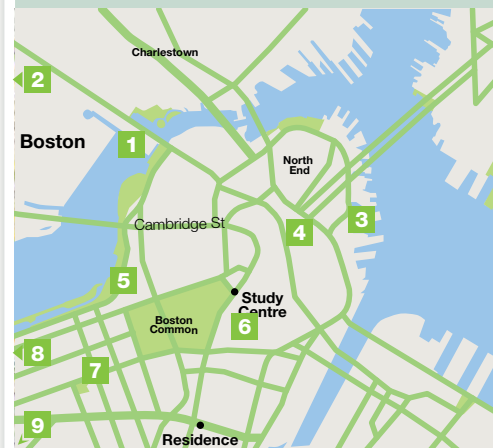




Beautifully designed interior at our Boston centre

Modern and bright in a downtown location, this vibrant Study Centre is located in a classic Boston brickwork building right by the shopping district and near Boston Common.

### NEAR THE SCHOOL



- 1 Science Museum
- 2 Harvard University and MIT
- 3 Aquarium
- 4 Faneuil Hall – Quincy Market and great shopping
- 5 Esplanade – beautiful riverside setting for free concerts and movies
- 6 Freedom Trail – explore Boston's historic past, starting at Boston Common
- 7 Copley Square – visit the Prudential Tower and Boston Public Library
- 8 Fenway Park – home of the Boston Red Sox
- 9 Museum of Fine Arts

### ACCOMMODATION

#### RESIDENTIAL

Residence options within 25 minutes of school include single and twin rooms in a residence that features a fitness centre and café or in self-catering student apartments.

- minimum age 16
- twin or single rooms
- en suite bathrooms

#### HOMESTAY

Available across the Greater Boston area.

- single and twin rooms
- half-board (14 meals)

#### FACILITIES

- WIFI-enabled
- IT suite
- Media center
- Interactive white boards
- student lounge
- centrally located
- activities

### COURSES

- General English
- **Including Beginner level**
- Business Communication Skills (core)
- English in Action
- English for Academic Purposes
- Exam preparation: TOEFL (core)
- Language Year Abroad
- One-to-one lessons
- Travel and Culture Programme



Technology in the classroom



Student lounge



Our study centre



I love that the Embassy centre is located in the heart of Downtown. I have found Boston a good city for living and studying, the city is really peaceful and people here are friendly. The innovative technology in class get me really excited, it helps the teachers teach us.

Akira, Thailand

Victoria

With stunning scenery and unbelievable access to the great outdoors, Canada is a culturally diverse country, rich in history and ready to be explored. With a friendly atmosphere and a personality all of their own, Embassy Study Centres in Canada are perfect for learning English.

# Canada



Niagara Falls



The Inner Harbour in Victoria



Fisgard Lighthouse National Historic Site in Victoria



The CN Tower in Toronto



Beautiful mountain ranges and ski resorts in Whistler

In Embassy, we can feel like family. Almost all of students know each other well with even teachers. When it comes activity, every week, we have many different activity. Among the activities, I love see CCC, Canadian Conversation club. It helps me a lot!

Su, Korea

Toronto





Bright classrooms in our modern centre



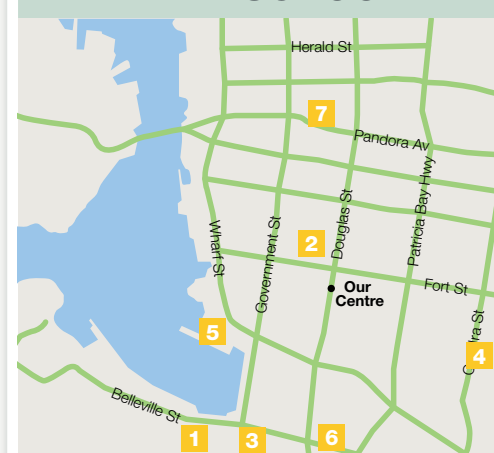
Our spacious and bright IT suite



Our centre

# Victoria

## NEAR THE SCHOOL



- 1 Parliament Buildings
- 2 Bay Centre Shopping
- 3 Royal BC Museum
- 4 Craigdarroch Castle
- 5 Inner Harbour
- 6 Beacon Hill Park
- 7 Chinatown



Find out how to get from  
Vancouver to Victoria

**Our Study Centre is conveniently located in the heart of downtown Victoria. With Canada's mildest climate, you can enjoy an outdoor lifestyle all year round. With the Canadian Conversation Club, and a great activity programme, Victoria students have more opportunities to practise speaking English outside of the classroom.**

### ACCOMMODATION

#### HOMESTAY

Available across the Victoria area.

- single rooms
- half-board (14 meals)
- full-board

#### RESIDENTIAL

During the summer months a variety of university campus style residences are also available.

### FACILITIES

- WiFi-enabled
- IT suite
- Interactive whiteboards
- Student lounge
- University counselling

### COURSES

- General English
- Business Communication skills (elective)
- Power Speaking Programme
- English for Academic Purposes
- Exam Preparation: TOEFL (electives)
- English Language Co-op
- Language Year Abroad



**Victoria is wonderful! Clean, friendly, cheerful...**

**I wish I had more time here. Everybody is polite and helpful, the city is safe and you can see flowers everywhere! I had only 6 months here and I'm leaving now speaking English, and sure that I had the best time of my life!**

Karoline, Brazil



Comfortable WiFi-enabled student lounge

# Toronto

**Our bright modern Study Centre is located on Bloor Street in the trendy centre of Toronto's shopping district, within easy walking distance of all the major attractions of Canada's largest city. Explore the unique neighbourhoods of Toronto and experience Canadian friendliness after class.**

### ACCOMMODATION

#### HOMESTAY

Available across the Greater Toronto area.

- single rooms
- half-board (14 meals)
- full-board and breakfast-only options are also available on request

#### RESIDENTIAL

During the summer months a variety of university campus style residences are also available (see embassyenglish.com for details).

### FACILITIES

- WiFi-enabled
- IT suite
- interactive whiteboards
- student lounge
- university counselling

### COURSES

- General English
- Business Communication skills (elective)
- English for Academic Purposes
- Exam Preparation: TOEFL (electives)
- English Language Co-op
- Language Year Abroad
- Power Speaking Programme



**There are many opportunities to communicate in English and I think it's good experience. Toronto is safe and peaceful. CN Tower, the sunset and the night view from the top are impressive.**

Suzuka, Japan

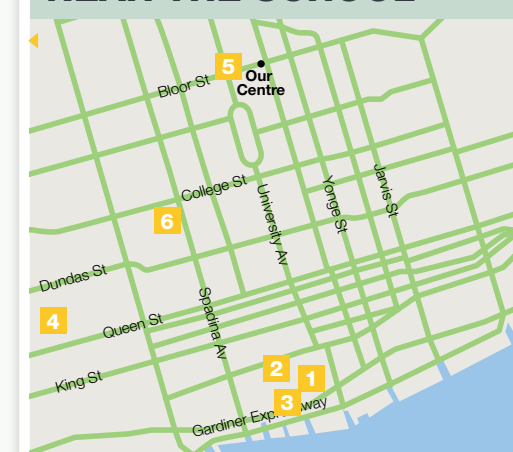


Modern, light and spacious classroom



Fully equipped IT suite

## NEAR THE SCHOOL



- 1 CN Tower
- 2 Entertainment District
- 3 Rogers Stadium: home of the Blue Jays
- 4 Centreville Amusement Park
- 5 Royal Ontario Museum
- 6 Kensington Market





Embassy gives you the chance not only to study English but knowledge about this country, and also nationalities. I've been learning how to live in a foreign country and keep my motivation.

Nana, Japan

**Stunning natural landscapes, a temperate climate, cosmopolitan cities, and beautiful beaches make Australia a great choice for a short English language holiday or a longer academic programme. In Australia you can get practical experience speaking English too. With a Student Visa, you can work up to 20 hours a week while you study.**

# Australia



Barbeque in Brisbane



Discover the excitement of Sydney Harbour



Skateboarding down the Esplanade in Surfers Paradise



English and surfing at Surfers Paradise



Kangaroos at Currumbin Wildlife Sanctuary





# Melbourne

**Our state of the art centre overlooks the beautiful cityscape of Melbourne. It's the perfect environment to learn with our highly experienced and qualified academic team at Embassy's second largest campus in the world!**

### ACCOMMODATION

#### RESIDENCE

Accommodation is available at residences.

- Single and Double Room
- En suite shower and toilet
- Bed, writing desk, chair and built-in wardrobe
- Flat screen, bar fridge, microwave, and reverse cycle air-conditioning/heating
- Self-catering
- 24-hour reception and security
- Internet access available at additional charge
- Gym
- Swimming pool
- BBQ area
- Common kitchen and laundry
- Free shuttle bus to the city

#### HOMESTAY

Available across the Melbourne area.

- single rooms
- half-board (16 meals)

### FACILITIES

- WiFi-enabled
- IT suite
- interactive whiteboards
- student lounge
- activities
- university counselling
- work placement assistance seminars

### COURSES

- General English
- Business Communication Skills (core)
- English for Academic Purposes
- Exam preparation: FCE and IELTS (core and electives)
- Language Year Abroad
- One-to-one lessons

### NEAR THE SCHOOL



- 1 Melbourne Shopping Centre
- 2 State Library
- 3 Parliament House
- 4 Federation Square
- 5 Melbourne Aquarium
- 6 Eureka Tower
- 7 Crown Entertainment Complex

**I was so surprised about the whiteboards in school. I've never seen classrooms so wide and bright – it's a nice view and near the centre of Melbourne. Teachers encourage me to be confident in English.**

Chatchaya, Thailand



Fully equipped IT suite



Bright spacious classrooms



UNIVERSITY of CAMBRIDGE  
ESOL Examinations  
Authorised Centre

# Sydney

**Study in Australia's largest city on the coolest street in Sydney. This centre has a great nationality mix, high-tech classrooms and a stunning location. This Study Centre offers a range of It offers a range of academic, exam and general English courses and is a Cambridge Exam Centre.**

### ACCOMMODATION

#### RESIDENTIAL

Comfortable residential accommodation within walking distance of the city and Study Centre. All rooms have own fridge and sink. Facilities include a sun deck, BBQ area, shared kitchen and laundry room.

- minimum age 18
- single and twin rooms
- shared bathrooms
- self-catering

#### HOMESTAY

Available across the Sydney area.

- single rooms
- half-board (16 meals)
- bed and breakfast option (age 18+)

#### LODGES

Single and shared self-catering accommodation (age 18+).

### FACILITIES

- WiFi-enabled
- IT suite
- library
- interactive whiteboards
- student lounge
- activities
- university counselling
- work placement assistance seminars
- shared campus with Charles Sturt University, Martin College

### COURSES

- General English
- Business English Skills
- Business Communication Skills
- English for Academic Purposes
- Exam preparation: FCE, CAE, IELTS (core, electives and intensive)
- Language Year Abroad
- One-to-one lessons

**Sydney is a city with a lot of places to go. If you like something cultural, sports, parks, you can find something that you love. It's a perfect opportunity to make friends and meet different people.**

Felipe, Brazil



IT stations throughout the centre

### NEAR THE SCHOOL



- 1 The Rocks
- 2 Sydney Opera House
- 3 Botanical Gardens
- 4 Sydney Tower
- 5 Darling Harbour – bars and restaurants
- 6 Queen Victoria building
- 7 Chinatown



Our modern reception







# Surfers Paradise

**Surfers Paradise on Australia's magnificent Gold Coast is an ideal place to study for those students chasing sun, surf and excitement. The modern Study Centre is just minutes from the beach – study in the morning, relax on the sand in the afternoon.**

## ACCOMMODATION

### HOMESTAY

Available across the Gold Coast area.

- single rooms
- half-board (16 meals)

### RESIDENTIAL

A variety of accommodation is available at lodges.

- minimum age 18
- single and shared rooms
- self-catering

## FACILITIES

- WiFi-enabled
- IT suite
- interactive whiteboards
- student lounge
- activities
- university counselling
- job advice workshops
- shared campus with Martin College

## COURSES

- General English
- Business Communication skills (elective)
- Exam preparation: IELTS (core and electives)
- One-to-one lessons
- English Plus Surfing: Enjoy professional surfing lessons after class

**I love the Gold Coast! There are a lot of beautiful beaches and a fantastic park. The centre is near the beach, in the centre of the city. The teachers are very good and I have improved my English a lot.**

**Roberta, Italy**

## SIGHTS



- 1 Dreamworld – an exciting theme park
- 2 Movie World
- 3 Sea World
- 4 Southport
- 5 Surfers Paradise
- 6 Q1 – spectacular views from the world's tallest residential tower



Light, modern residences



Relaxing student lounge for spending time with friends

# Brisbane

**Our modern, purpose-built school is centrally located in sunny Brisbane, a friendly modern city with a tropical al fresco climate.**

## ACCOMMODATION

### RESIDENTIAL

Our residence is a 15-20 minute walk from the Study Centre, close to South Bank Parklands, public transport, cafés, museums and galleries. Facilities include dining room, lounge, courtyard and laundry room.

- minimum age 18
- single and twin rooms
- shared bathrooms
- half-board: breakfast and dinner Monday to Friday

### HOMESTAY

Available across the Brisbane area.

- single rooms
- half-board (16 meals)

## FACILITIES

- WiFi-enabled
- IT suite
- interactive whiteboards
- student lounge
- activities
- university counselling
- job placement assistance
- purpose-built campus
- shared campus with Martin College

## COURSES

- General English
- Business Communication skills (elective)
- English for Academic Purposes
- Language Year Abroad
- Exam Preparation: IELTS (core and electives)
- One-to-one lessons



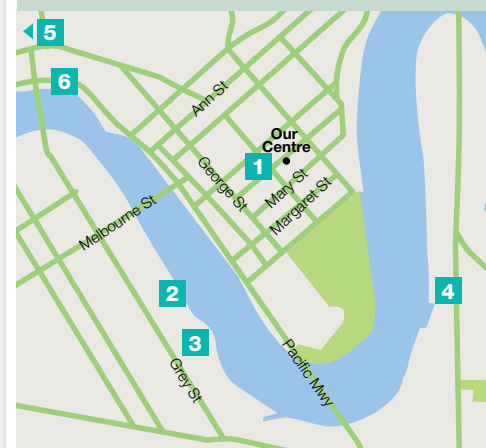
**Brisbane is a beautiful city, you can go out and find lots of fun. The technology in the classroom helped to make the class more interesting. Definitely my English skills have improved a lot. I think it was the best decision in my life.**

**Erika, Colombia**



Great library facilities

## NEAR THE SCHOOL



- 1 Queen Street Mall
- 2 The Wheel of Brisbane
- 3 South Bank – visit the man-made beach
- 4 Kangaroo Point Cliffs
- 5 Mount Coot-tha
- 6 CityCat River Trip



Light and spacious class rooms





I've improved a lot during my days in Embassy. When I came to NZ, I could barely make a sentence whereas now I can speak and laugh with my friends. Wherever I go in this country, I am impressed. My friends are making it fun and enjoyable.

Jules, France

New Zealand is a country whose landscape needs no introduction. World famous for incredible scenery and a wealth of year-round outdoor sports, studying in New Zealand is about more than being in the classroom. People are friendly and easy-going and welcome students from around the world to their wonderful country every year.

# New Zealand



Large, bright classrooms



Auckland was the best city for study in the world. Everyone is friendly and always want help you as much as they can. Every teacher out here is perfect I felt independent and confident to speak English.

Calvin, Vietnam



Modern well stocked library

# Auckland



Waitakere Ranges Regional Parks



Auckland's Sky Tower



Views across the harbour to Auckland



Harbour tours

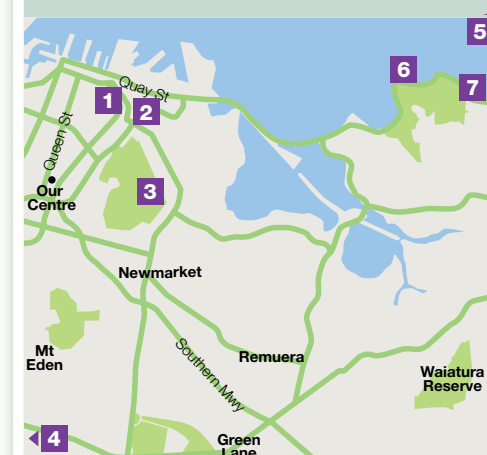


Cathedral Cove, Coromandel



Plenty of photo opportunities in New Zealand

## NEAR THE SCHOOL



- 1 Sky Tower
- 2 University of Auckland
- 3 Auckland Museum
- 4 Piha Beach
- 5 Waiheke Island
- 6 Kelly Tarlton's Aquarium
- 7 Mission Bay

Our modern Study Centre is conveniently located in central Auckland very close to all the facilities and amenities this fantastic, vibrant, waterfront city has to offer.

## ACCOMMODATION

### HOMESTAY

Available across the Auckland area.

- single rooms
- half-board (16 meals)

### RESIDENTIAL

A variety of accommodation is available at lodges.

- minimum age 18
- single and shared rooms
- self-catering

## FACILITIES

- WiFi-enabled
- IT suite
- interactive whiteboards
- student lounge
- activities
- university counselling
- library
- work placement assistance seminars
- shared campus with Taylors College

## COURSES

- General English
- Exam Preparation: FCE (elective) IELTS (core)
- One-to-one lessons





## Embassy Pathways

**Your pathway to university success without having to take an IELTS or TOEFL examination.**

Choose from over 70 institutions worldwide.

This Embassy Pathway course is for students intending to pursue university and further education courses in the USA, Canada, the UK and Australia. Successful completion of this course guarantees entry into one of our university or educational partners.

Course length: 10, 20, 30 or 40 weeks.

Entry requirement:

High school completion and successful conditional acceptance of academic qualifications.

- Stage 1 B1+ equivalent to IELTS 4.5 / TOEFL 30
- Stage 2 B2 equivalent to IELTS 5.0 / TOEFL 35
- Stage 3 B2+ equivalent to IELTS 5.5 / TOEFL 46
- Stage 4 C1 equivalent to IELTS 6.0 / TOEFL 60

To find out more go online  
[embassypathways.com](http://embassypathways.com)



## Embassy Summer

**A summer to remember...**

Whether you want to stroll through a buzzing coastal city, surf some excellent waves, photograph stunning scenery or simply chill out in the sun, we have just the summer experience for you. Embassy Summer programmes are designed to make the most of their location so that you can get the summer experience you want.

**Programmes and locations**

Embassy Summer has programmes and locations with something for everyone...

- Amazing facilities throughout all our locations
- Fantastic locations in the UK, USA, and Australia
- Juniors, groups & individuals
- All levels beginner to advanced
- Accommodation in college residence or homestay
- Full & exciting activity programmes

To find out more go online  
[embassysummer.com](http://embassysummer.com)



## Embassy Academy

**Embassy Academy is for young learners aged 8 to 17, offering the perfect multinational environment for English language development.**

The Embassy Academy experience

- A summer school programme tailored to each child
- Learn English with friendly, highly qualified native-speaking teachers
- Stimulating afternoon courses with professionally qualified instructors
- Excursions and trips on three days, each week
- Live in a traditional countryside boarding school
- An excellent student mix (maximum 20% of any one nationality)
- A staff to student ratio of 1:5 providing lots of individual attention

The welfare of children at all of our schools is our most important consideration. We are "in loco parentis" and apply the same standards of care and safety that any parent would expect. Our staff are selected with these skills and attributes in mind.

To find out more go online  
[embassyacademy.com](http://embassyacademy.com)



## Embassy StudyTours

**With Embassy StudyTours, students from around the world can take short courses in English and experience a new culture and lifestyle in a choice of 18 schools across three continents.**

Groups can choose to create specific programmes and accommodation so that they have exactly the type of experience they want. Take a break with Embassy StudyTours and discover what the world has to offer.

- 20 lessons per week with standard or intensive programmes available
- Minimum group size: 15
- Age ranges: 10+
- Accommodation: full or half-board, host families or residential

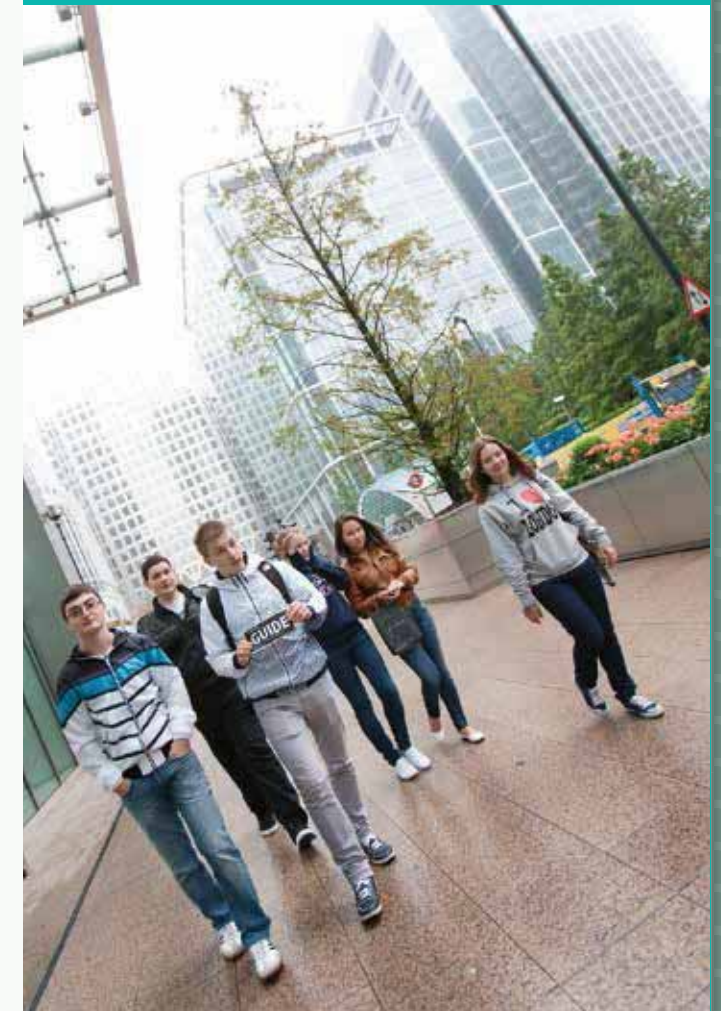
**UK:** Brighton, Cambridge, Chalfont St Giles, Hastings, London, Oxford and Seaford

**USA:** Boston, Fort Lauderdale, LA Long Beach, New York, San Diego and San Francisco

**Australia:** Brisbane, Melbourne, Surfers Paradise and Sydney

**Canada:** Toronto and Victoria

To find out more go online  
[embassystudytours.com](http://embassystudytours.com)





# Practical and enrolment information



## EMBASSY SUPPORT

Before you leave home we'll give you all the information you need about your travel, study and accommodation arrangements.

We'll meet you at the airport and take you to your accommodation (additional transfer fee).

We'll give you access to the Embassy handbook on your first day. It has all the information you need.

From your first day to your last, our student services teams will also give you any help you need.

We'll give you a telephone number to contact us in an emergency, 24 hours a day.

## PAYING

If you're enrolling through a local representative, please make payment to them. If enrolling directly, please pay by direct bank transfer or credit card to Embassy. All bookings are subject to our Terms and Conditions. You'll find details on the enrolment form and on [embassyenglish.com](http://embassyenglish.com).

## STUDYCARE INSURANCE (UK, USA, CANADA AND NEW ZEALAND)

This is a comprehensive insurance plan specially created for international students. It will give you full protection from the day you travel. Full details are in the StudyCare insurance booklet, or online at [embassyenglish.com/studycare](http://embassyenglish.com/studycare)

## OVERSEAS STUDENT HEALTH COVER (AUSTRALIA)

As an international student on a student visa you are required to have Overseas Student Health Cover for the duration of your visa. It is important that your cover is maintained for the duration of your programme/s. A full list of prices is available online at [embassyenglish.com](http://embassyenglish.com).

## CONFIRMING ENROLMENT

We will confirm your enrolment by email, to you or your local representative.

## TO ENROL WITH EMBASSY

Contact your nearest Embassy representative or enrol direct online at [embassyenglish.com](http://embassyenglish.com).

If you need anything answered which isn't in this brochure, please contact our International Admissions Centre in the relevant country. See back page for contact details.

## PUBLIC HOLIDAY DATES 2014

	UK	USA	CAN	AUS			NZ
				NSW	QLD	VIC	
January	1	1, 20	1	1, 27	1, 27	1, 27	1, 2, 27
February		17	10V, 17T				6
March						10	
April	18, 21		18	18, 21, 25	18, 21, 25	18, 21, 25	18, 21, 25
May	5, 26	26	19			5	
June				9		9	2
July		4	1				
August	25		4		13B, 29S		
September		1	1				
October		13	13	6	6		27
November		27, 28	11V			4	
December	25, 26	25	25, 26	25, 26	25, 26	25, 26	25, 26
School Christmas closure	Dec 22 – Jan 4 2015		Dec 22 – Jan 4, 2015	Dec 22 – 26 2015	Dec 22 – 26 2015	Dec 22 – 26 2015	Dec 22 – Jan 4 2015

## CAMBRIDGE EXAM DATES 2014

Start	End	Weeks	Exam dates	Notes
January 6 2014	March 7 2014	9	FCE only: March 8	
January 6 2014	March 14 2014	10	CAE only: March 15	
March 31 2014	June 6 2014	10	FCE – June 10, CAE – June 11	We advise 11 weeks accommodation because the exam is in week 11
September 22 2014	November 28 2014	10	FCE – Dec 2, CAE – Dec 4, 3	We advise 11 weeks accommodation because the exam is in week 11



# Terms and Conditions

## 1. Payment of Fees

Fees must be paid before visa documents are issued and no later than 14 days before arrival.

In Australia, students with multiple study periods must pay the total due on enrolment before visa documents are issued and no later than 14 days before arrival. Subsequent instalment payments must be received in accordance with the due dates stated on the invoice.

In California, students with programmes more than 16 weeks in duration may elect to pay in full or to pay tuition in instalments. Students choosing to pay in instalments must pay the total due on enrolment before visa documents are issued and no later than 14 days before arrival. Subsequent instalment payments may be received in accordance with the due dates stated on the invoice. Instalment due dates for each course are determined according to the length of the programme. Instalments will be no more than the equivalent of 16 weeks' worth of the programme tuition until the programme duration midpoint, when any outstanding balance must be received in full.

Transfer and accommodation documents will be released 14 days prior to arrival once payment has been received in full (where applicable). For all late payments made after the due date, a fee of 2% of the payment amount will be added.

## 2. Services

The company reserves the right to change details of its services, including courses, facilities, accommodation and course dates, where circumstances beyond the company's control necessitate such changes or where the number of enrolments is not enough to operate a course viably.

## 3. Course Entry Levels

Most courses require minimum levels of English for entry. If after the placement test, a student is found to be below the minimum level required to start the course, the school reserves the right to place the student in a class with fewer lessons and/or a different curriculum. Where this results in extending the duration of a student's course, Embassy may need to issue a new Certificate of Enrolment. Students may be transferred to the nearest centre running a lower level course.

## 4. Changes to Enrolments

The company reserves the right to charge an Administration Fee (GBP50; USD80; AUD80; NZD90) each time course or accommodation details are changed or cancelled after a place has been confirmed. Additionally, when a change request for a previously confirmed accommodation is received less than 7 days in advance of the scheduled arrival date, an equivalent week's accommodation penalty fee will be charged. These fees will not apply to upgraded or extended courses.

## 5. Changes to Airport Transfers

Notification of change to airport transfers must be sent to our International Admissions Centre at least 2 full working days prior to the designated arrival time. If notice is not received the company cannot be held liable for operational errors, and an additional Administration Fee will apply.

## 6. Accommodation and Travel details

Students that have booked Embassy accommodation will receive details upon receipt of payment and travel information and no more than 14 days prior to arrival. If travel information is received less than 2 working days prior to the scheduled arrival date then the company may not be in a position to provide the transfer or accommodation service for the weekend of arrival.

## 7. Accident and Medical Insurance

Every student must have appropriate insurance and provide a document with the student's name and date of coverage as proof. The company recommends that all students take our own StudyCare insurance which is tailored to the needs of international students. Cover under the StudyCare insurance policy does not commence until the insurance fees have been paid in full.

StudyCare is not available to students within Australia.

In the USA, Canada, the UK, and New Zealand, students not wishing to take StudyCare must present an equivalent insurance certificate on arrival. Students without insurance must take StudyCare.

In the USA, StudyCare is mandatory for students taking English in Action. In Canada, StudyCare is mandatory for students taking the International Internship Programme and the Work Placement programme.

In New Zealand, having appropriate and current medical and travel insurance is compulsory for all international students. This is a requirement of the New Zealand Ministry of Education under the Code of Practice for the Pastoral Care of International Students, found on their website at [www.minedu.govt.nz/goto/international](http://www.minedu.govt.nz/goto/international).

a) Students without adequate insurance or sufficient evidence of insurance will have StudyCare Insurance added to their programme invoice.

b) Students may purchase international insurance from their home country as long as it covers the minimum prescribed insurance requirements as detailed in the Code of Practice. Students must provide the school with a translated copy for verification purposes prior to arrival.

c) Most international students are not entitled to publicly funded health services while in New Zealand. If a student receives medical treatment during a visit, they will be liable for the full costs of that treatment. Full details on entitlements to publicly funded health services are available through the Ministry of Health, and can be viewed on their website at [www.moh.govt.nz](http://www.moh.govt.nz).

d) The Accident Compensation Corporation (ACC) provides accident insurance for all New Zealand citizens, residents and temporary visitors to New Zealand, but a student may still be liable for all other medical and related costs. Further information can be viewed on the ACC website at [www.acc.co.nz](http://www.acc.co.nz).

In Australia, it is compulsory for those on Student Visas to take Overseas Student Health Cover (OSHC) for the duration of the time they are in Australia. Students need to buy OSHC before coming to Australia, to cover them from when they arrive. This ensures they have adequate health care arrangements while studying in Australia. If the student chooses for Embassy to arrange OSHC for the first course/year only of their programme, it is their responsibility to either extend or take out OSHC for the rest of their time in Australia. They must provide evidence of cover for the entire study period before a Confirmation of Enrolment will be issued.

There will be no refund of StudyCare Insurance post-arrival.

## 8. General Refund Policy

All refunds will be sent to the account of the Embassy representative to whom the fees were originally paid, or to the individual from whom Embassy has received the original direct payment, except in New Zealand where the refund will be paid directly to the student.

If a student's visa application is rejected after payment has been received all fees, excluding any cancellation fees detailed in the Cancellation Policy below, will be refunded within 28 days, provided a visa refusal letter is received by our International Admissions Centre at least 2 working days before the course is due to start and the student has fulfilled all requirements for a visa application. Students in San Diego, Los Angeles and San Francisco must sign a California State Enrolment & Refund Agreement form. Refunds will be processed according to these terms and conditions.

### Australia

In Australia this agreement, and the availability of complaints and appeals processes, does not remove the right of the student to take action under Australia's consumer protection laws. Refunds will be provided to students within 28 days if the student defaults based on a visa denial provided the International Admissions Centre receives the visa denial letter.

If the school defaults, the student is eligible to receive a refund of the unexpended pre-paid tuition fees which the student has paid to the school. The refund amount will be based on the portion of tuition for which the student has paid but for which tuition has not yet been received.

In the unlikely event that the school is unable to deliver a course in full, the student will be offered the refund amount in accordance with the above paragraph. The refund will be paid within 14 days of the day on which the course ceased being provided. Alternatively, the student may be offered enrolment in a suitable alternative course by the school at no extra cost.

The student has the right to choose whether they would prefer a full refund of course fees, or to accept a place on another course. If they choose placement on another course, Embassy will ask them to sign a document to indicate acceptance of the placement.

If the school is unable to provide a refund or to place the student on an alternative course the Australian government's Tuition Protection Scheme's (TPS) director will provide access to a suitable alternative course.

## 9. Cancellation Policy

Embassy defines cancellation as the period prior to start of first course. All cancellations must be made in writing to our International Admissions Centre and the following refund policies apply:

Enrolment Fee, Courier Fee, Accommodation Placement Fee, or Administration Fee will not be refunded for any student cancelling their course before arrival.

## 10. Tuition Refunds before Arrival UK, USA and Canada

Where cancellations are received in writing more than 14 days before the first course start date 100% of tuition fees will be refunded, but any courier fee, enrolment fee, UK Visa application fee (CAS) and added administration fees are non-refundable. Where cancellations are received in writing 14 days or less prior to the first course start date students will be charged GBP250 (UK), USD350 (USA) or CAD350 (Canada), in addition to the fees listed in this paragraph.

### Australia

Students will be charged the Enrolment Fee plus 30% of total tuition fees, as well as all other sundry fees if cancelling prior to the start of their course.

### New Zealand

In New Zealand, students will be refunded tuition fees in full, less the Enrolment Fee.

## Accommodation Refunds before Arrival

a) Students cancelling their accommodation less than 14 days before arrival will be charged an amount equal to 1 week of accommodation.

b) For cancellations less than 48 hours before arrival, an amount equivalent to 4 weeks of accommodation will be charged, or the full accommodation fee if the booking is less than 4 weeks in duration.

## 11. Withdrawal Policy

Embassy defines withdrawal as termination of a course after the first course has started. Any withdrawal must be made in writing to the centre director of the school where the student is studying.

Enrolment Fee, Courier Fee, Accommodation Placement Fee, and StudyCare or OHSC premium will not be refunded for any student terminating their course after arrival.

## Tuition Refunds after Arrival

Written notification of withdrawal must be provided as a condition for making refunds. If a student breaches the visa conditions, no refund of the semester fees will be made.

### USA

Refunds are calculated from the last date of attendance.

a) For courses of 4 weeks or less, no refund will apply.  
b) For courses longer than 4 weeks, students who terminate in the first 4 weeks will be refunded all tuition fees except for 4 weeks

calculated at the non-discounted (Certificate of English) rate.

c) For courses longer than 4 weeks, students whose withdrawal occurs after the first 4 weeks but before the midpoint of their course, Embassy will retain a pro-rated amount of tuition at the non-discounted (Certificate of English) rate.

d) For students whose withdrawal occurs after the midpoint, Embassy will retain all tuition fees.

### UK, Canada and Australia

No tuition fees will be refunded to students who notify the centre of their withdrawal after the commencement of their first course. When a student has enrolled in multiple locations/courses, the course start date for the purpose of this clause is that of the initial Embassy course.

### New Zealand

a) For courses of 1 to 34 days duration, if the student withdraws within the first 2 days of the course, they will receive 50% of the total fees paid. If they withdraw after the first 2 days, no refund is made.

b) For courses of 35 days to 3 months duration, if the student withdraws within the first 5 days of the course, they will receive 75% of the total fees paid. If they withdraw after the first 5 days, no refund is made.

c) For courses greater than 3 months, if written notice of termination is received by the end of the eighth day of the course, a termination fee of the lesser of NZD500 or 10% of tuition will apply. Students terminating after this period will not receive a refund.

## Accommodation Refunds after Arrival

a) Students leaving their accommodation must give at least 4 weeks of notice in writing. After deducting the price of accommodation used, including the required notice period charged at the standard accommodation rate, accommodation fees in excess of the accommodation period will then be refunded, less the administration fee.

b) In Australia and New Zealand, a 10% withdrawal fee will be deducted from the balance.

## 12. Visas

Students should contact their local embassy, Consulate or High Commission to ensure they are allowed to enter and study in their chosen country. If a student does not possess or maintain a valid visa status in accordance with the visa conditions then their course will be terminated without refund.

For students wishing to study in the USA, Embassy is authorised under Federal Law to enrol non-immigrant students. By law, to issue the I-20 form, with the Enrolment Form, we must receive:

a) the student's home address  
b) proof of sufficient funds to meet tuition and living expenses such as a current bank statement or a letter from your bank  
c) a letter or notarised affidavit guaranteeing support from your parent or employer or sponsor

No visa support documentation will be provided until all fees have been received.

## 13. Holidays

(Public and Language Year Abroad)

Schools will be closed on public holidays and no compensation is provided for missed days due to public holidays. All students in the USA and UK in Homestay accommodation over the Christmas and New Year 2 week period will be charged a seasonal supplement of GBP50 (UK) or USD100 (USA) per week. Dates for Language Year Abroad include the following vacation periods between terms:

2014: 15 – 30 March, 7 – 22 June and  
30 August – 21 September..

## 14. Resolution of Disputes

In the event of a dispute between an individual student and the school, procedures are in place to facilitate the resolution of the dispute. Any complaint should first be made to the student's Embassy Centre Director. Each complaint will be fully investigated provided that it is received within a month of the course ending and all fees have been paid. If the matter is not resolved, the student should communicate in writing to the local Embassy Head Office (see back cover).

In Australia, students may lodge an external appeal or complain about this decision through the Overseas Students Ombudsman. The Overseas Students Ombudsman offers a free and independent service for overseas students who have a complaint or want to lodge an external appeal about a decision made by their private education or training provider. See the Overseas Students Ombudsman website [www.oso.gov.au](http://www.oso.gov.au) or phone 1300 362 072 for more information.

In California, a student may file a complaint with the Bureau for Private Postsecondary Education by calling 1 888 370 7589 or by completing a complaint form, which can be obtained on the bureau's internet website, [bppe.ca.gov](http://bppe.ca.gov).

## 15. Liability

Embassy and its staff and representatives will not be liable for loss, damage or injury to persons or property howsoever caused, except where liability is expressly imposed by law. Embassy will not be liable in the event that any service contracted to be supplied by Embassy becomes impossible to supply for any reason or any cause outside the control of Embassy.

## 16. Valid Prices

Prices are valid from 1 January 2014. Prices are subject to change without notice and will only be confirmed upon invoicing. For current prices please refer to [embassyenglish.com](http://embassyenglish.com). Agents should refer to the Partners website: [studygroup.com/partners](http://studygroup.com/partners).

## 17. Expulsion

Embassy reserves the right to expel or evict from accommodations arranged by Embassy any student whose conduct is unsatisfactory at the discretion of the centre director. In UK, USA, Canada and NZ that decision is final. No fees will be refunded in such cases and any unpaid fees become payable immediately. In Australia, a student has the right to appeal against such a decision and details of that process are available from the school. Students and their parents or guardians, where applicable, agree to pay the tuition fees and other charges applicable for the course on the due dates. It is understood and agreed that failure to do this may result in suspension from the programme and cancellation of the enrolment.

## 18. Promotional Activity

The student (and, where applicable, his or her parent or guardian):

(a) agrees that the student's photographs, videos, artwork or other works, as well as recorded or written testimonials and details of the student's achievements (hereto referred to as "Student Images and Testimonials") may be used by Embassy and its parent company Study Group, or by a third party agent of Study Group, worldwide for promotional purposes including in its printed and online marketing materials and on any social media network without further consent or notification; and

(b) gives consent to Embassy and to its parent company Study Group storing, or transferring across international borders, copies of the Student Images and Testimonials for such purposes.

## 19. Data Protection

Any information provided to Embassy may be held on computer and shall be used in accordance with its data protection registration and the national data protection laws applicable. Our Privacy Policy is available on the Embassy website.

## 20. Further Information: Australia

a) ESOS framework: The Australian Government wants overseas students in Australia to have a safe, enjoyable and rewarding place to study. Australia's laws promote quality education and consumer protection for overseas students. These laws are known as the ESOS Framework and they include the Education Services for Overseas Students (ESOS) Act 2000 and the National Code. Visit the website [http://aei.gov.au/AEI/ESOS/QuickInfo/ESOS\\_FrameWork\\_.pdf](http://aei.gov.au/AEI/ESOS/QuickInfo/ESOS_FrameWork_.pdf) for details. A student who has concerns about any of these matters after arrival at Embassy, should contact the Centre Director.

b) Information provided may be made available to Commonwealth and State agencies and the Fund Manager of the ESOS Assurance Fund, as part of our obligations under the ESOS Act 2000 and the National Code.

c) Each student must notify the campus of any change in their contact details or address while enrolled in the course.

d) All courses offering fewer than 24 lessons (20 hours) per week are not available to student visa holders.

e) Provider Name: Study Group Australia Pty Limited  
CRICOS Provider Codes: 01682E (NSW); 01755D (QLD); 03079G (VIC); 00126G (WA)  
Provider Name:

f) Any school-aged dependants accompanying overseas students to Australia will be required to pay full fees if they are enrolled in either a government or non-government school.

g) Students studying in Queensland who are concerned about the conduct of a provider may contact officers of the Queensland Department of Education; the Chief Executive of that Department has power under the Education (Overseas Students) Act to suspend or cancel the registration of a provider or a course within that state.

h) Average living expenses

Australia: AUD18,610 per year

New Zealand: NZD18,000

## 21. Further Information: New Zealand

a) Protection of Student Fees: Fees paid by students will be fully protected by a Bank Guarantee and cash held by an independent Trustee. In the unlikely event of the school closing prior to the conclusion of courses, school fees will be refunded on a pro-rata basis by the Trustee.

b) If students experience difficulty with procedures in New Zealand, they may contact the Qualifications Authority at PO Box 160, Wellington. Telephone +64 4 802 3000.

c) Code of Practice: Embassy has agreed to observe and be bound by the Code of Practice for the Pastoral Care of International Students published by the Minister of Education. Copies of the Code are available on request from this institution or from the New Zealand Ministry of Education website [www.minedu.govt.nz](http://www.minedu.govt.nz). The Code of Practice also establishes that International Educational Appeal Authority (IEAA) and the Review Panel receive and adjudicate on student complaints. Their email address is: [info.ieaa@inedu.govt.nz](mailto:info.ieaa@inedu.govt.nz).

d) Immigration: Full details of visa and permit requirements, advice on rights to employment in New Zealand while studying, and reporting requirements are available through the New Zealand Immigration Service, and can be viewed on their website at [immigration.govt.nz](http://immigration.govt.nz).

e) Each student must notify the school of any change to their contact details, accommodation type, and residential address.

## 22. Further information: USA

For students travelling as unaccompanied minors on flights to and from the USA, a one-way USD200 unaccompanied minor airport service fee will be charged. Pocket money requests will incur a processing charge of USD80.

## 23. Further information: UK

Embassy English (Brighton, Cambridge, London, Oxford) is registered with the UKBA register of sponsors and its sponsor licence number is 8V1P5MAW1. This empowers Embassy English to issue Confirmation of Acceptance of Studies (CAS) at its discretion.

Pocket money requests will incur a processing charge of GBP50.

Courses with Standard 20 classes total 16 hours and 40 minutes of tuition per week, and with Intensive 28 total 23 hours and 20 minutes of tuition per week.

## 24. Force Majeure

Embassy is not liable in the event where it is unable to fulfil any service to which it is contractually bound because of fire, natural disaster, acts of government, failure of suppliers or subcontractors, labour disputes or other reasons which are outside its control.

## 25. Agents

All the above terms are applicable to direct students and agents unless variations are expressly agreed between the agent and Embassy or their parent company, Study Group, in writing.





## Quality education worldwide

Embassy English is part of Study Group, a global leader in providing academic pathways that create superior career outcomes for students.

We are proud of our role in the education community, and are passionate about helping students achieve their dreams and aspirations.

Our strategic pillars:

- Access to Higher Education
- Provision of Higher Education
- Provision of Career Education
- Provision of Language Education

### United Kingdom – Student Enrolment Advisers

1 Billinton Way, Brighton BN1 4LF United Kingdom  
T +44 1273 339 400 F +44 1273 339 398

#### Agents

[studygroup.com/partners](http://studygroup.com/partners)

#### Students

[embassyenglish.com](http://embassyenglish.com)

## Building Futures

with StudyGroup



## Social Responsibility

As a global education provider Study Group seeks to make a difference by funding the construction of schools in disadvantaged communities. Through our charitable initiative Building Futures, Study Group works to identify those communities where the building of a school will contribute to the preservation of the social structure for future generations.

Study Group also recognises its responsibility towards protection of the environment and fosters among its staff, suppliers, customers, shareholders and local communities an understanding of environmental issues in the context of its business. Our collective task is to ensure that we continually improve the environmental impact of our global activities.



Green Office



Building Futures



School Maintenance



People

[studygroup.com](http://studygroup.com)



Publishing printed materials using environmentally-friendly products.  
Please recycle this brochure after use.



## Winners

Chain School 2007 2009 2010 2012  
Innovation of the year 2008



16688\_SEA 08.13